

11 Service Part List

11.1 Overview

This chapter 11 contains information on the ACCUVIX V20 Service Part.

Please refer to the ACCUVIX V20 Part Catalogue to Check the replacement parts and their software versions for each system configuration.

For installing and verifying system parts, please refer to figures and part table in this chapter.

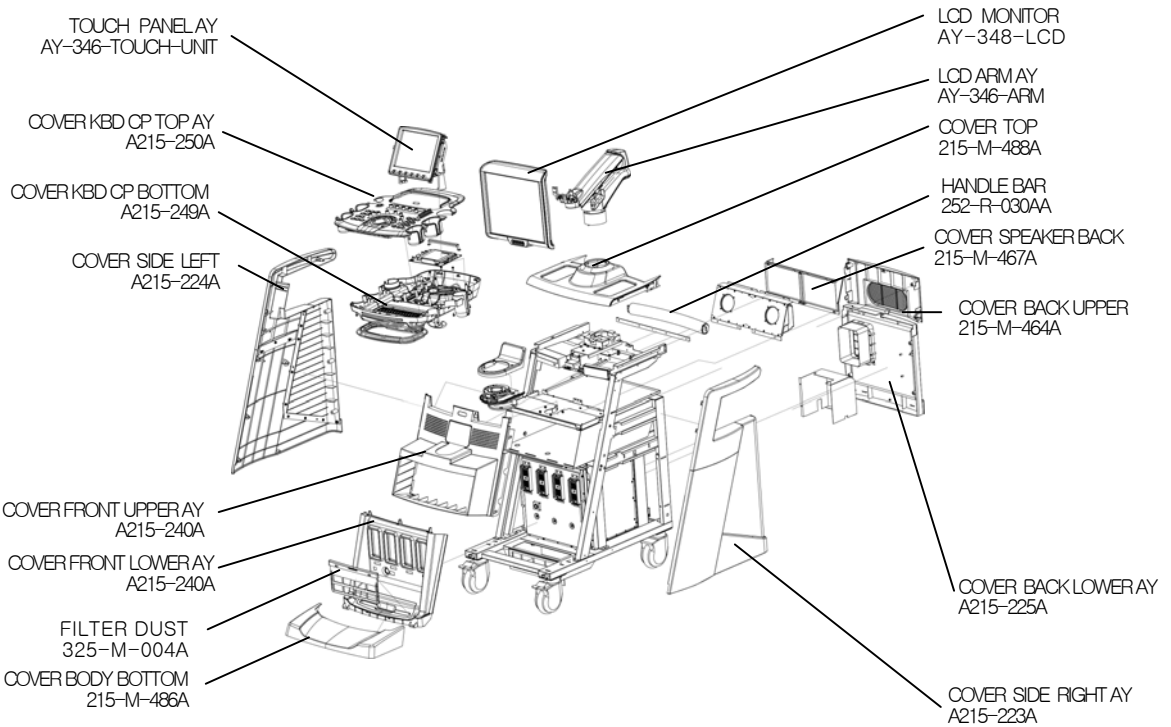
Part numbers are indicated in the corresponding table.

Prior to ordering parts, please verify whether the existing parts can be replaced according to the current service policy

Contents Service Part List

11.1	Overview	11-1
11.2	Cover	11-2
11.3	Ultrasound System Part	11-4
11.4	PC Part	11-6
11.5	Power Part	11-8
11.6	User Interface Part	11-9
11.7	Electric Part	11-11
11.8	Option	11-12
11.9	Probe	11-13

11.2 Cover

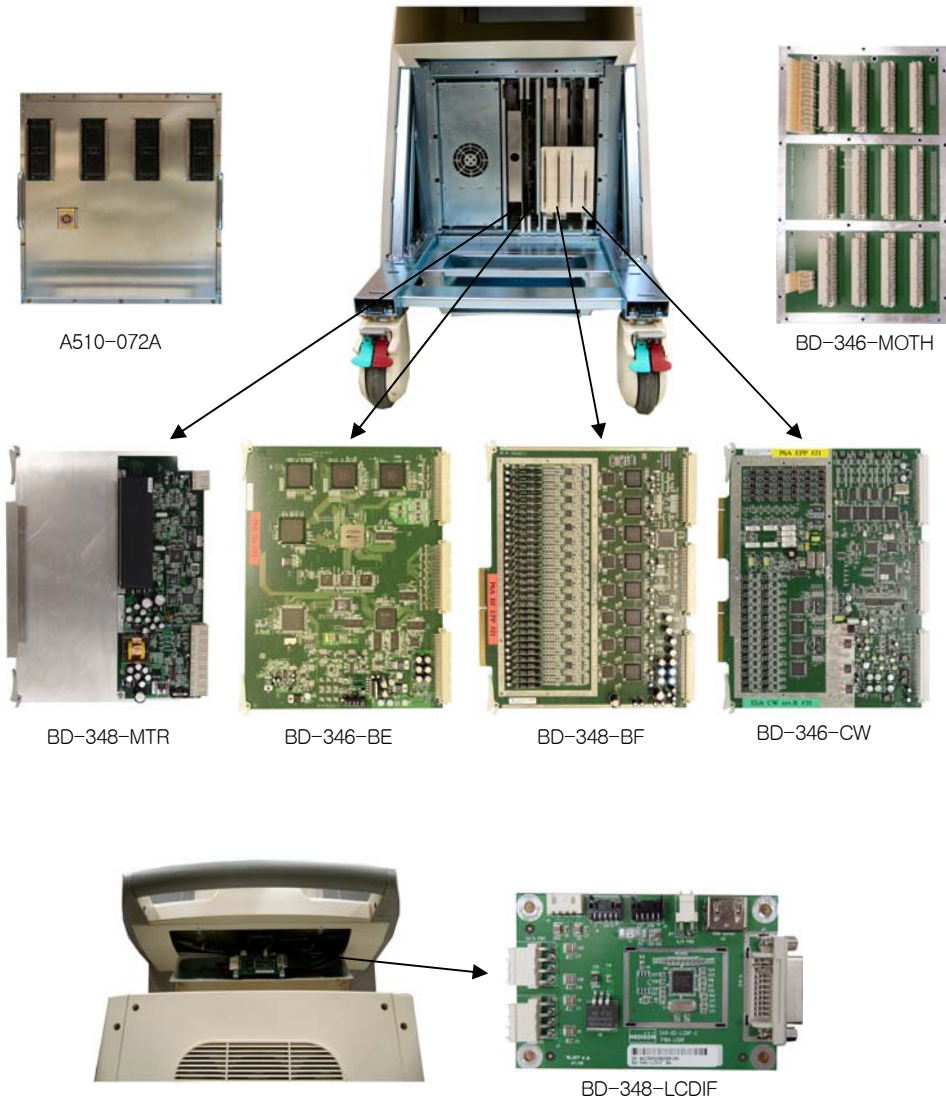


[Figure 11-1] ACCUVIX V20 Cover

PART NAME	PART NUMBER	DESCRIPTION
COVER CP TOP AY	A215-250A	COVER CP TOP AY ACCUVIXV20
COVER CP BOTTOM AY	A215-249A	COVER CP BOTTOM ACCUVIXV20
COVER ALPHA KBD AY	A215-251A	COVER ALPHA KBD AY ACCUVIXV20
COVER SIDE RIGHT AY	A215-246A	COVER SIDE RIGHT AY ACCUVIXV20
COVER SIDE LEFT AY	A215-247A	COVER SIDE LEFT AY ACCUVIXV20
COVER FRONT UPPER AY	A215-240A	COVER FRONT UPPER AY ACCUVIXV10
COVER DUCT RIGHT AY	A215-223A	COVER DUCT RIGHT AY ACCUVIXV10
COVER DUCT LEFT AY	A215-224A	COVER DUCT LEFT AY ACCUVIXV10
COVER FRONT LOWER AY	A215-240A	COVER FRONT LOWER ACCUVIXV20
COVER BODY BOTTOM	A215-486A	BODY BOTTOM ACCUVIXV20
COVER TOP	215-M-488A	COVER TOP ACCUVIXV20
HANDLE BAR	252-R-030A	RUBBER HANDLE BAR SONOACEX8
COVER SPEAKER BACK	215-M-467A	COVER SPEAKER BACK ACCUVIXV10
COVER BACK LOWER ASS'Y	A215-225A	COVER BACK LOWER AY ACCUVIXV20
COVER BACK UPPER	215-M-464A	COVER BACK UPPER ACCUVIXV10
FILTER DUST	325-M-004A	FILTER DUST ACCUVIXV20

[Table 11-1] ACCUVIX V20 Cover

11.3 Ultrasound System Part

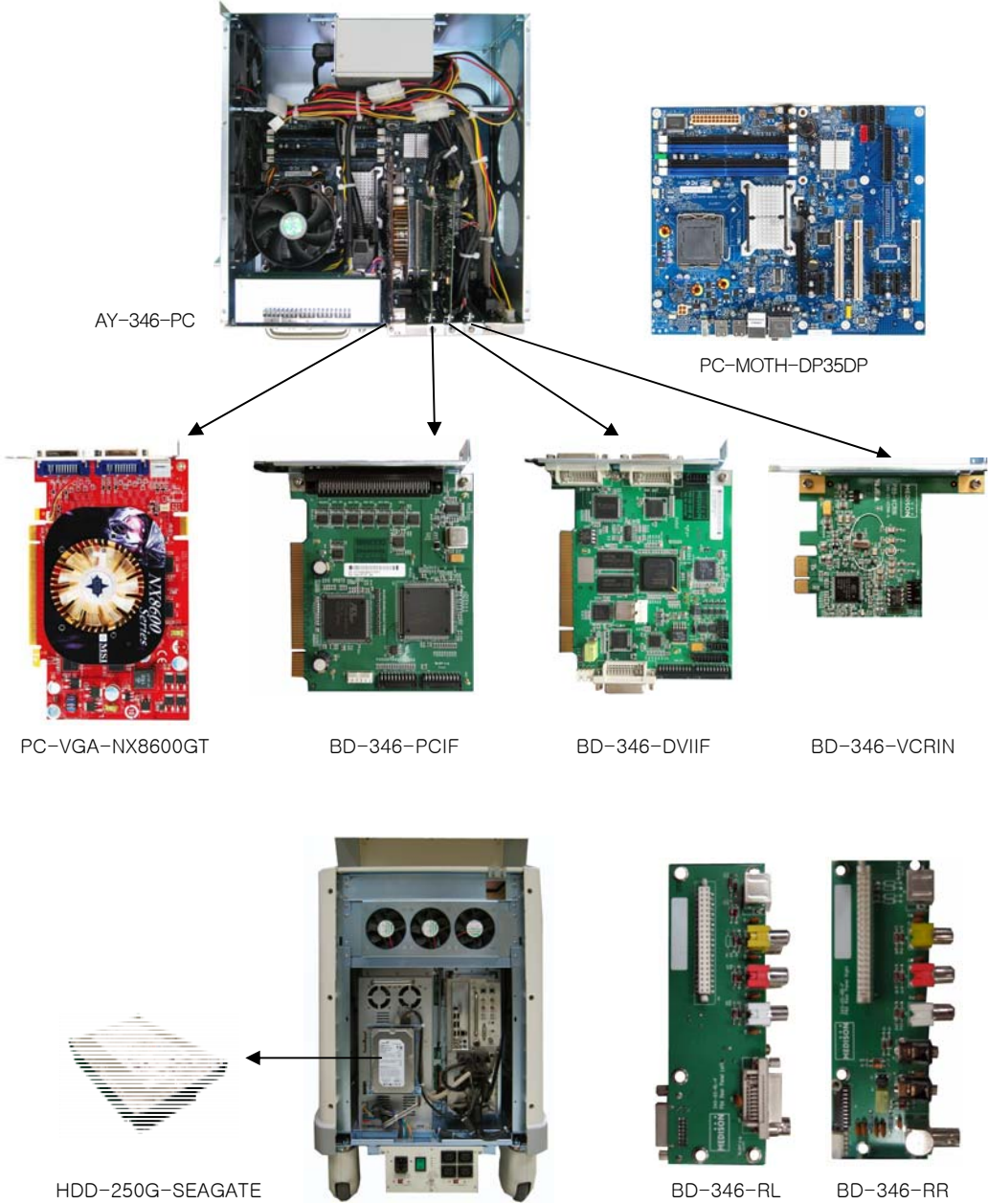


[Figure 11-2] Ultrasound System Part

PART NAME	PART NUMBER	DESCRIPTION
PSA ASSY	A510-072A	PSA ASSY ACCUVIX V20
NON PSA ASSY	A510-069A	NON PSA ASSY (NON CW) ACCUVIX V20
PSAF BOARD	BD-346-PSAF	PSAF BD ACCUVIX V20
NON PSAF BOARD	BD-346C-PSAF	PSAF BD (NON CW) ACCUVIX V20
PSAB BOARD	BD-346-PSAB	PSA BD ACCUVIX V20
NON CW BOARD	BD-346C-CW	CW BD (NON CW) ACCUVIX V20
CW BOARD	BD-346-CW	CW BD ACCUVIX V20
BF BOARD	BD-348-BF	BF BD ACCUVIX V10
BE BOARD	BD-346-BE	BE BD ACCUVIX V20
MTR BOARD	BD-348-MTR	MTR BOARD ACCUVIX V10
MOTH BOARD	BD-346-MOTH	MOTHER BD ACCUVIX V20
LCDIF BOARD	BD-348-LCDIF	LCD INTERFACE BD ACCUVIX V10

[Table 11-2] Ultrasound System Part

11.4 PC Part



[Figure 11-3] PC Part

PART NAME	PART NUMBER	DESCRIPTION
DVI BOARD	BD-346-DVIIF	DIGITAL VIDEO INTERACTIVE BD ACCUVIX V20
PCI BOARD	BD-346-PCIF	PC INTERFACE BD ACCUVIX V20
VCRIN BOARD	BD-346-VCRIN	VCR INPUT BD ACCUVIX V20
RR BOARD	BD-346-RR	REAR PANEL RIGHT BD ACCUVIX V20
RL BOARD	BD-346-RL	REAR PANEL LEFT BD ACCUVIX V20
PC AY	AY-346-PC	PC AY ACCUVIX V20
PC MOTHER BD	PC-MOTH-DP35DP	PC MOTHER INTEL ATX DP35DP
PC VGA CARD	PC-VGA-NX8600GT	256M MEMORY, MSI NX8600GT
PC CPU FAN	FAN-CF80TM	CF80TM CPU FAN (APACK)
PC FAN	AY-FAN-348-PC	PC FAN ASSY ACCUVIX V10
HDD	HDD-250G-SEAGATE	SEAGATE SATA II 250G HDD

[Table 11-3] PC Part

11.5 Power Part

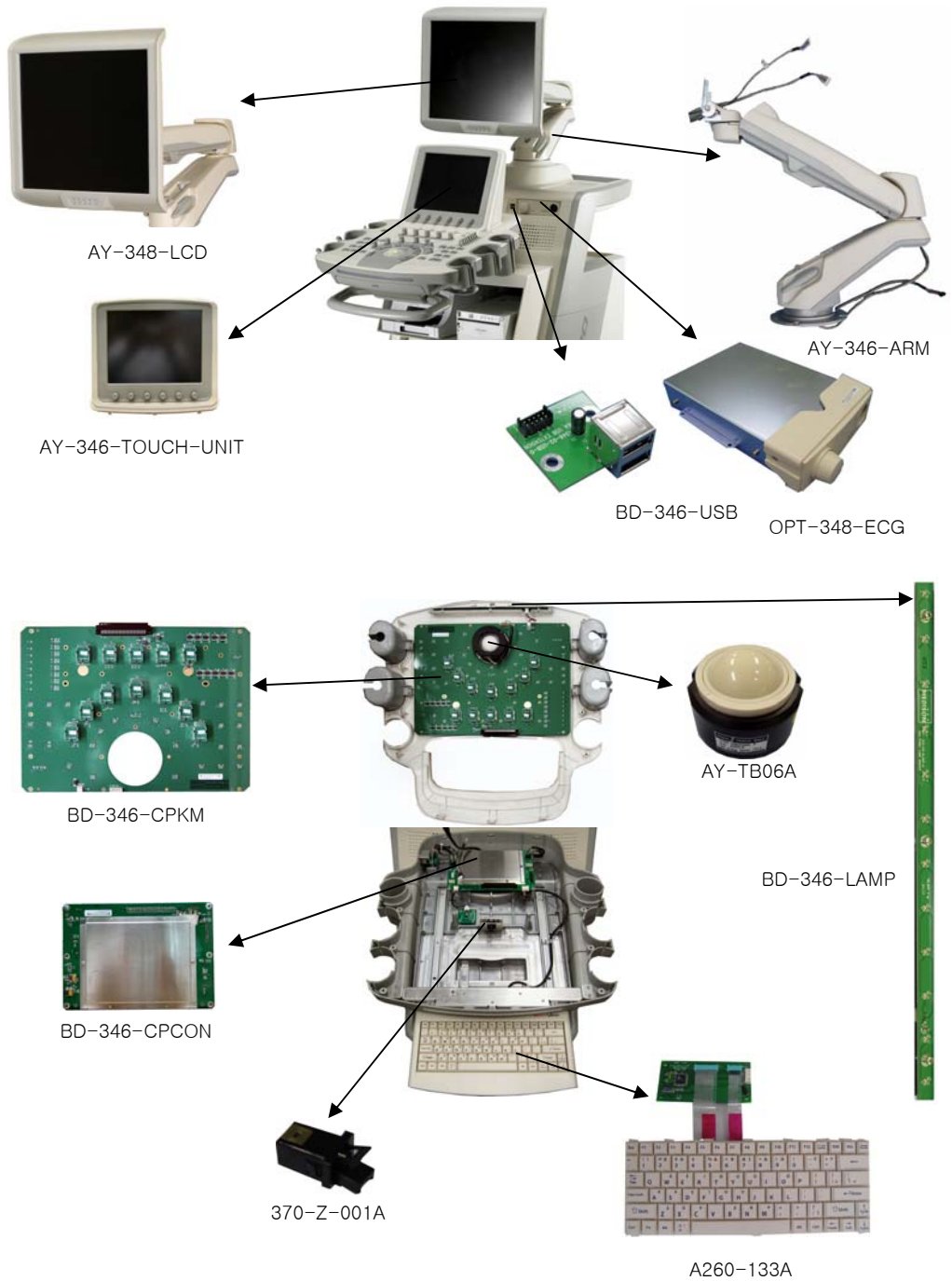


[Figure 11-4] Power Part

PART NAME	PART NUMBER	DESCRIPTION
DDM POWER	AY-348-PWR-DDM	POWER AY DC-DC MODULE ACCUVIX V10
ADM POWER	AY-348-PWR-ADM	POWER AY AC-DC MODULE ACCUVIX V10
PC POWER	AY-345-PWR-PC	PC POWER ST-250MAK SONOACE X8

[Table 11-4] Power Part

11.6 User Interface Part

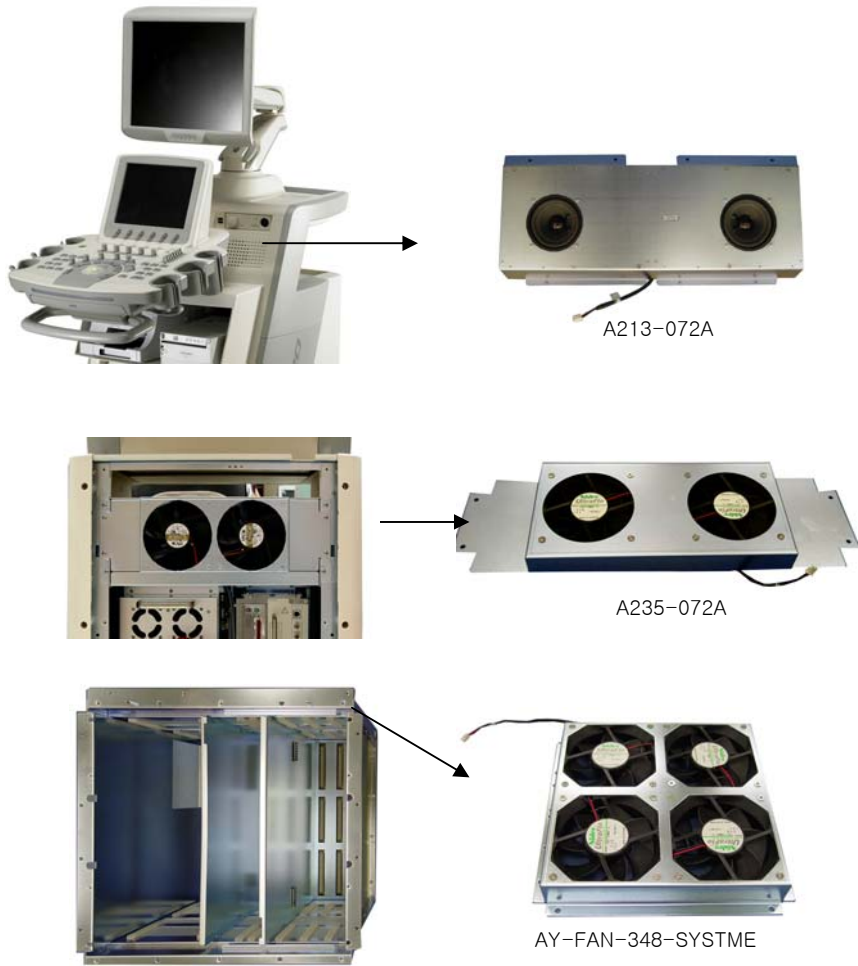


[Figure 11-5] User Interface Part

PART NAME	PART NUMBER	DESCRIPTION
TOUCH PANEL AY	AY-346-TOUCH-UNIT	TOUCH PABEL ASSY ACCUVIX V20
TP INTERFACE BD	BD-346-TPIF	TOUCH PANEL INTERFACE BD ACCUVIX V20
TP LCD	MNT-LCD/AA104SG01	LCD TOUCH PANEL MISUBISHI 10.4"
TP INVERTER BD	BD-346-INVERTER	TP BACK LIGHT INVERTER ACCUVIX V20
TP CONTROLLER BD	BD-346-TOUCH-USB	TP DATA CONTROLLER ACCUVIX V20
AHLPA KEY AY	A260-Z-049A	ALPHA KBD ASSY ACCUVIX V10
DVD DRIVE	PC-DVDRW-TSH653D	DVD DRIVE
ECG MODULE	OPT-348-ECG	ECG MODULE ACCUVIX V10
CP CONTROLLER	BD-346-CPCON	CP CONTROLLER BD ACCUVIX V20
KM BOARD	BD-346-KM	KEY MATRIX BD ACCUVIX V20
LAMP BD CHASSIS	A235-057A	BRACKET LAMP AY X8
LAMP BOARD	BD-346-LAMP	LAMP BD ACCUVIX V20
TRACKBALL	AY-TB06A	TRACKBALL YEL UNIT 58MM TAMAGAWA
USB BOARD	BD-346-USB	USB DB ACCUVIX V20
LCD ARM AY	AY-346-ARM	LCD MONITOR ARM ACCUVIX V20
LCD AY	AY-348-LCD	LCD MONITOR AY ACCUVIX V10
LCD	MNT-LCD-LTM170E8-L01	LCD MONITOR UNIT SONOACE X8

[Table 11-5] User Interface Part

11.7 Electric Part



[Figure 11-6] Electric Part

PART NAME	PART NUMBER	DESCRIPTION
SPEAKER	A213-072A	CASE SPEAKER ASSY ACCUVIX V10
SYSTEM FAN	A235-072A	BRACKET BACK FAN ACCUVIX V10
SYSTEM FAN	AY-FAN-348-SYSTEM	SYSTEME FAN ACCUVIX V10

[Table 11-6] Electric Part

11.8 Option

PART NAME	PART NUMBER	DESCRIPTION
OPTION	OPT-346-DMR	DYNAMIC MR
OPTION	OPT-346-SCI	SPATIAL COMPOUND IMAGING
OPTION	OPT-346-4D	LIVE 3D
OPTION	OPT-346-3DXI	3DXI
OPTION	OPT-346-CARDIAC	CARDIAC MEASUREMENT
OPTION	OPT-346-CW	CE FUNCTION
OPTION	OPT-346-ECG	ECG MODULE
OPTION	OPT-346-DICOM	DICOM, DICOM MR
OPTION	OPT-346-XISTIC	XISTIC

[Table 11-7] Option

11.9 Probe

PART NAME	PART NUMBER	DESCRIPTION
PROBE	PB-AXC2-5EL	C2-5EL
PROBE	PB-AXC2-6IC	C2-6IC
PROBE	PB-AXC3-7IM	C3-7IM
PROBE	PB-AXL4-7EL	L4-7EL
PROBE	PB-AXL5-12/50EP	L5-12/50EP
PROBE	PB-AXL5-13IS	L5-13IS
PROBE	PB-AXL6-12IS	L6-12IS
PROBE	PB-AXL7-16IS	L7-16IS
PROBE	PB-AXL8-15IS	L8-15IS
PROBE	PB-AXP2-4AC	P2-4AC
PROBE	PB-AXP3-5AC	P3-5AC
PROBE	PB-AXEC4-9IS	EC4-9IS
PROBE	PB-AX3D2-6ET	3D2-6ET
PROBE	PB-AX3D4-8ET	3D4-8ET
PROBE	PB-AX3D5-9ES	3D5-9ES
PROBE	PB-AX3D5-9EK	3D5-9EK
PROBE	PCW-20-FGG/3B	CW2.0
PROBE	PCW-40-FGG/3B	CW4.0

[Table 11-8] Probe