



GE Probes Care, Safety & Cleaning Guide

WARNING:

Ultrasound probes are highly sensitive medical instruments requiring proper care and cleaning.

Failure to follow these guidelines and those provided in the Basic Users Manual may result in:

Severe lens damage & image quality degradation not covered under the GE product warranty.

Coming Soon:

GE global web site for the latest in GE recommended germicides & couplants

GE Probe Care & Safety Guidelines:

Handle all probes with CARE

✘ Prevent damage to probes by placing them in their holder, carrying case or storage drawer when not in use

Do Not drop or subject probe to any type of mechanical shock. Impact may compromise probe operation, safety features or result in sharp edges that could damage the protective sheath and/ or injure sensitive tissue

✘ Inspect probe lens, cable & housing before each exam.

Do Not use damaged probes. Injury to the operator or patient may occur if cracks, cuts, sharp edges or exposed wiring exist. Cleaning and/ or gel solutions may leak into the probe resulting in electrical shock. Discontinue use and notify the GE Service representative.

✘ Avoid unnecessary stress or bending to cable.

Do Not twist, kink or pinch cable. Excessive bending or stress on cable may result in damage to its insulating properties causing shock to the patient or operator

✘ Strictly follow the immersion table provided in this guide when cleaning & disinfecting probes

Do Not soak probe longer than recommended by germicide manufacturer.

Do Not immerse probe connector in germicide.

✘ Use only GE recommended gels and germicides and strictly follow the manufacturers instructions when applying, cleaning & disinfecting probes

Do Not use non-recommended coupling gels that contain lotions, mineral oil, olive oil, lanolin, polyethylene glycol, dimethylsilicone, methyl or ethyl parabens

Do Not clean probes with non-recommended germicides that contain methanol, ethanol, bleach or alcohol

Do Not steam, heat autoclave or use ethylene oxide (EO) gas processes on general surface or TE/TV/TR probes.

GE Probe Cleaning Guide

Note: Prevent disease transmission by properly cleaning & disinfecting probe surfaces (between patients) that come in contact with body tissue. Refer to the APIC Guidelines for Selection & Use of Disinfectants

Always use sterile, legally marketed probe sheaths for intracavitary, intra-operative and biopsy procedures

GE does not substantiate the claims of infection control capabilities of recommended germicides

Strictly follow the germicide manufacturers instructions for duration of contact time. Failure to do so may result in ineffective decontamination, as well as, severe lens damage & probe failure not covered under the GE product warranty

Cleaning: All Probes

Disconnect probe from ultrasound console and rinse probe with a warm nonabrasive soap & water solution. Meticulously scrub probe as needed with a soft brush, sponge or gauze pad to remove all gel and bio-residues. Air dry or dry with soft cloth or gauze pad

Low Level Disinfecting: General Surface Probes

After cleaning probe: Spray, wipe or immerse probe in a disinfectant (Table I) as directed by the germicide manufacturer. Thoroughly rinse with sterile water and pat dry with a soft sponge, cloth or gauze pad

High Level Disinfecting: TE/TV/TR Probes

After cleaning probe: Immerse probes that come in contact with mucous membranes, blood or other body fluids in a GE recommended high level disinfectant (Table I). Strictly follow the germicide manufacturers instructions. Thoroughly rinse with sterile water and pat dry with a soft sponge, cloth or gauze pad.

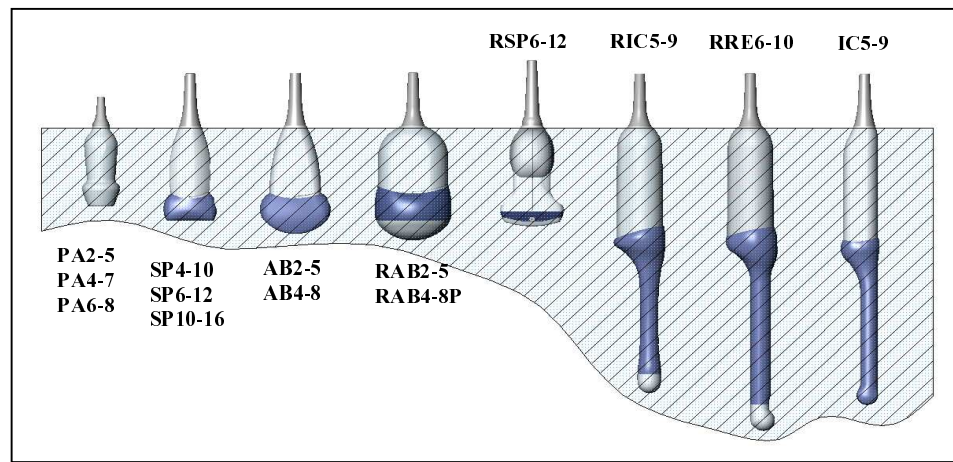


Table I: KRETZ Probe Recommended Disinfectants

<i>Brand Names</i>	<i>Ingredient</i>	<i>Type</i>	<i>AB2-5 AB4-8</i>	<i>SP4-10 SP10-16</i>	<i>SP6-12</i>	<i>PA2-5</i>	<i>PA4-7 PA6-8</i>	<i>IC5-9</i>	<i>RAB4-8P RAB2-5</i>	<i>RSP6-12</i>	<i>RIC5-9</i>	<i>RRE6-10</i>
Disinfectants												
T-Spray II	Quaternary Ammoniums	Spray	NR	NR	NR	R	R	NR	NR	NR	NR	NR
T-Spray	Quaternary Ammoniums	Spray	NR	NR	NR	R	R	NR	NR	NR	NR	NR
Virex II 256	Quaternary Ammoniums	Liquid	NR	NR	NR	NR	NR	NR	NR	NR	NR	NR
Ster Bac Blu	Quaternary Ammoniums	Liquid	NR	NR	NR	NR	NR	NR	NR	NR	NR	NR
Sani-Cloth HB	Quaternary Ammoniums	Wipe	NR	NR	NR	NR	NR	NR	NR	NR	NR	NR
Couplants												
Aquasonics 100	Gel	Gel	R	R	R	R	R	R	R	R	R	R
High Level Disinfectants												
Cidex	Glutaraldehyde	Liquid	R	R	R	R	R	R	R	R	R	R
Cidex Plus	Glutaraldehyde	Liquid	NR	NR	NR	NR	NR	NR	NR	NR	NR	NR
Metricide	Glutaraldehyde	Liquid	NR	R	R	R	R	R	R	R	R	R
Wavicide-01	Glutaraldehyde	Liquid	NR	R	R	R	R	R	R	R	R	R
Sekusept Extra	Glutaraldehyde	Liquid	NR	NR	NR	R	R	NR	NR	NR	NR	NR
Cidex OPA	ortho-phthlaldehyde	Liquid	R	R	R	R	R	R	R	R	NR	NR
Sporox II	Hydrogen Peroxide	Liquid	NR	NR	NR	NR	NR	NR	NR	NR	NR	NR
Gigasept	Succindialdehyde, formaldehyde,	Liquid	NR	NR	NR	R	R	NR	R	R	R	R
Gigasept FF	Succindialdehyde	Liquid	NR	NR	NR	R	R	NR	NR	NR	NR	NR
Pera Safe	Sodium Perborate	Liquid	NR	NR	NR	NR	NR	NR	NR	NR	NR	NR

1/10/02

R = Recommended Use

NR = Not Recommended For Use

GE does not substantiate recommended germicide manufacturers claims of infection control capabilities



Copyrighted © 2002 by GE Medical Systems