

- **System preparation:** When the system power is off, turn off the **System On/Off** switch on the bottom rear of the system.
- **Disassembly procedure**
 1. Remove 11 screws on the bottom of the CP Assy.

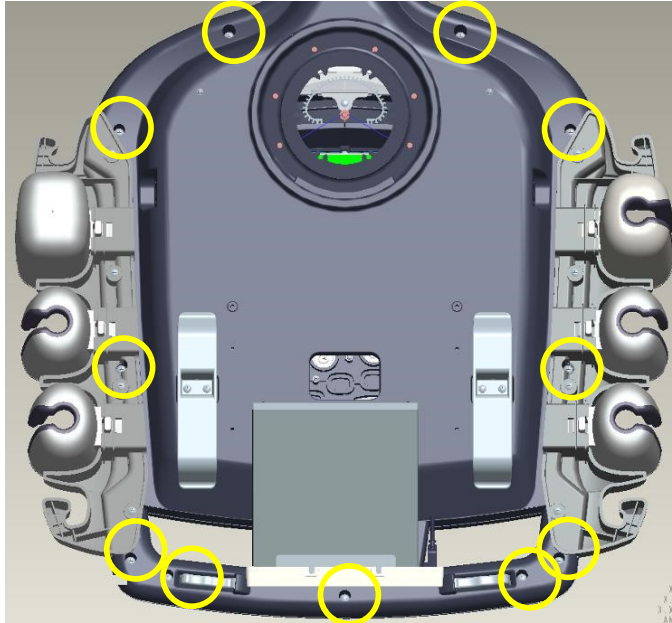


Figure 5-14 Screws of CP Assy

2. Lift up the top cover of the CP Assy.



Figure 5-15 Lifting up the top cover

3. Disconnect 2 cables from the CP Assy.

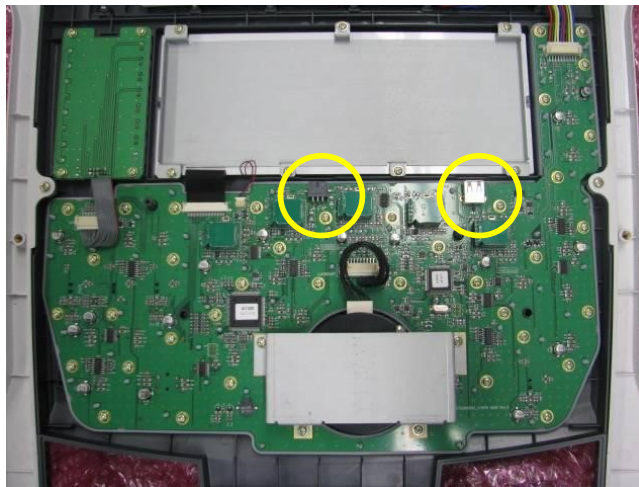
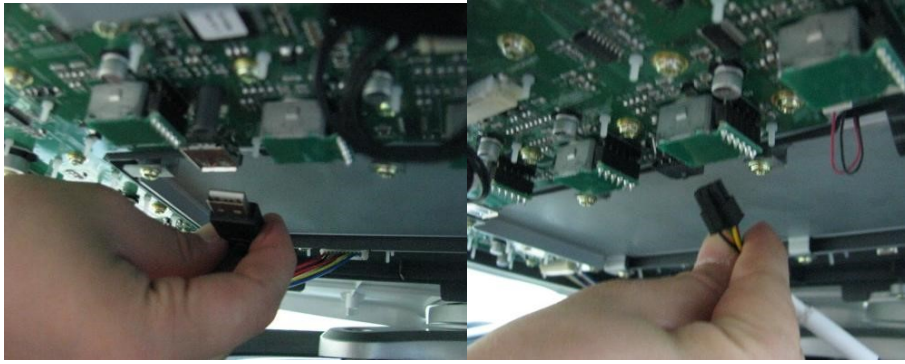


Figure 5-16 Disconnecting 2 cables

- **Reassembly procedure**

Change the new parts and reassemble them in reverse order of disassembly.

5-1-7 AN Keyboard (QWERTY Keyboard) Assy

- **Required manpower and time:** 1 person, approximately 30 minutes
- **System preparation:** When the system power is off, turn off the **System On/Off** switch on the bottom rear of the system.
- **Disassembly procedure**
 1. Remove the CP Assy. Refer to **5-1-6 CP Assy**.

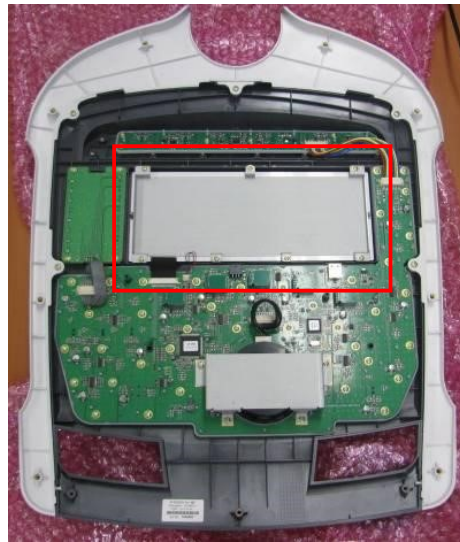


Figure 5-17 AN Keyboard Assy in CP Assy

2. Disconnect 2 cables.

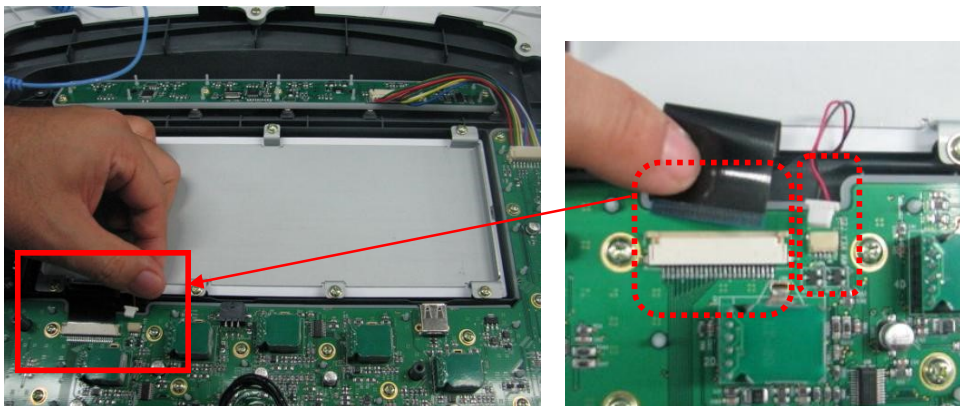


Figure 5-18 Disconnecting 2 cables

3. Remove 7 screws and remove the bracket.

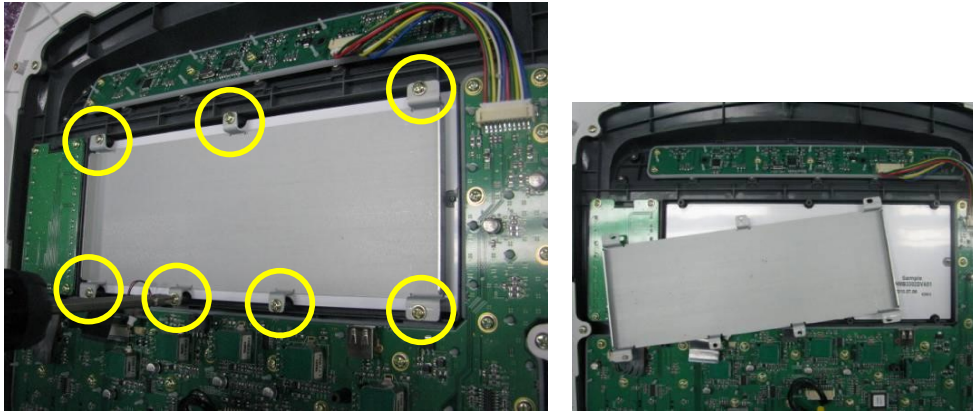


Figure 5-19 Screws and bracket of AN Keyboard Assy

4. Remove the AN Keyboard Assy.



Figure 5-20 Removing the AN Keyboard Assy

- **Reassembly procedure**

Change the new parts and reassemble them in reverse order of disassembly.