

FRA Outils pour instruments Bien-Air

DEU Werkzeuge für Bien-Air Instrumente

ENG Tools for Bien-Air instruments

ITA Attrezzatura per strumenti Bien-Air

ESP Herramientas para instrumentos Bien-Air

Table des matières
Inhaltsverzeichnis
Table of Contents
Índice
Indice

Turbine

Gyro & Gyrolina	1-2
Ondine & Prestilina	3-4
Black-Pearl & Boralina	5-6
Bora & Bora Black-Line	7-8
Prestige & Prestige Black-Line	9-10
Eolia B	11-12

Micromoteur/Electric motors

MC2	13
MC3 & MX & MX2 & MX-LED	14-15
Basch & 80K	16

Pièce à main/Handpieces

PM & S80 & S120	17-20
PML 1121	21

Contre-angles/Contra-angles

CA	22-24
CA 1:4 / 1:5	25-26

Microscie/Microsaw

27

Moteur à air/Airmotors

Aquilon	28
---------	----

Prolab

29

Osseodoc / Osseouno

30

Osseostap

31

Mesure/Measuring

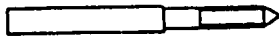
32-34

Divers/Various

35-37

Colle

38-39



REF 007.02.10 **REF 3300135-001**

FRA Taraud de nettoyage
 DEU Gewindebohrer
 GBR Thread cleaning tap
 ITA Maschio filettat pulizia
 ESP Útil de limpieza



REF 007.42.05 **REF 3300172-001**

FRA Outillage pour palier Gyro
 DEU Demontagewerkzeug Luftlager
 GBR Air bearing removing tool
 ITA Utensile per palier Gyro
 ESP Útil para desmontar palier Gyro



REF 007.05.01 **REF 3300136-001**

FRA Tige d'extraction
 DEU Abzieher für Einsatz Reduzierdüse
 GBR Extraction shaft
 ITA Chiave tubo spray/rid.
 ESP Llave extracion reductor



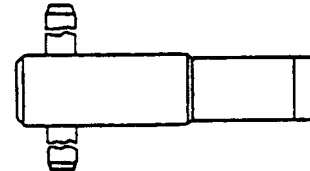
REF 107.02.02 **REF 3600056-001**

FRA Grattoir pour logem.biconiq.
 DEU Werkzeug Reinigung Spannfutter
 GBR Cleaning tool for chuck lodging
 ITA Utensile pulizia pinza Gyro
 ESP Útil para limpiar



REF 007.41.01 **REF 3300170-001**

FRA Poussoir montage distributeur
 DEU Einsetzwerkzeug für Luftlager
 GBR Air bearing inserting tool
 ITA Pulsante mt distributore
 ESP Pulsador para montar palier Gyro



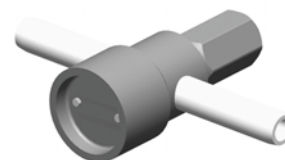
REF 107.02.03 **REF 3600057-001**

FRA Fraise à main pour tête
 DEU Schaftfräser für Gyro Kopf
 GBR Hand milling cutter for head
 ITA Fresa per testina
 ESP Fresa con mango para cabeza



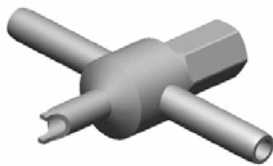
REF 007.41.02 **REF 3300171-001**

FRA Douille montage distributeur
 DEU Montagehülse für Luftlager
 GBR Air bearing mounting tool
 ITA Ghiera guida palier
 ESP Casq para montar palier Gyro



REF 107.02.04 **REF 3600058-001**

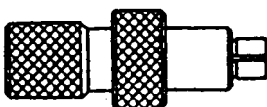
FRA Clé couvercle Gyro 3 sp.-bico. / fg
 DEU Schlüssel für Deckel Gyro 3sp. / fg
 GBR Gyro 3 spray cap remover / fg
 ITA Chiave cappelotto Gyro 3 sp. / fg
 ESP Llave tapa Gyro 3 sp. / fg

**REF 107.28.03****REF 3600069-001**

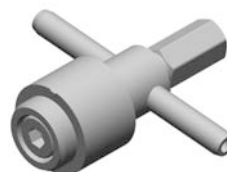
FRA Tournevis pour coude
 DEU Schlüssel für Mutter Kniestück
 GBR Key for fixing screw
 ITA Chiave viti fissaggio gambo
 ESP Llave para codo

**REF 3600025-001**

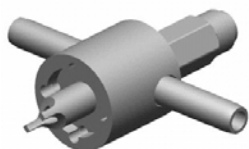
FRA Kit guidage Lina/Bora New
 DEU Rörchen Lina/Bora New
 GBR Guide's tubes Lina/Bora New
 ITA Tubo di guida Lina/Bora New
 ESP Tubo Lina/Bora New

**REF 107.42.01**

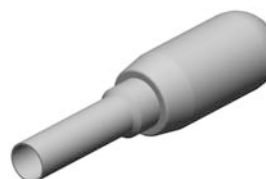
FRA Outil pour démonter distr.
 DEU Werkzeug für Luftlagerwechsel
 GBR Bearing remover
 ITA Chiave smontaggio distr.
 ESP Útil para desmontar distr.

**REF 3600036-001**

FRA Clé butée arrière Unifix
 DEU Schlüssel Unifix
 GBR Key Unifix
 ITA Chiave attacco Unifix
 ESP Llave Unifix

**REF 107.60.10-001**

FRA Clé diffuseur spray Ø 1.6 mm
 DEU Werkzeug für Sprayverteiler Ø 1.6 mm
 GBR Spray diffusor key Ø 1.6 mm
 ITA Chiave diffusore spray Ø 1.6 mm
 ESP Llave difusor de spray Ø 1.6 mm

**REF 4600019-001**

FRA Poignée pousse-bague Lina
 DEU Traggriff Lina
 GBR Handle Lina
 ITA Maniglia Lina
 ESP Asa Lina

**REF 3600024-001**

FRA Poussoir corps arrière Lina
 DEU Schlüssel für Lina
 GBR Key for Lina
 ITA Chiave attacco Lina
 ESP Llave para Lina

**REF 007.08.23****REF 3300141-001**

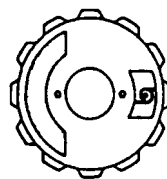
FRA Outil à redresser tête Ondine

DEU Richtwerkzeug für Kopf Ondine

GBR Tool for buckling head Ondine

ITA Alesatore Ondine

ESP Llave para redondear cabeza ond

**REF 209.30.22**

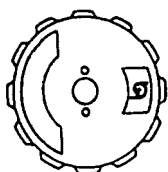
FRA Clé couvercle Ondine BP

DEU Werkzeug Deckel Ondine Druckknopf

GBR Ondine cap remover push type

ITA Chiave testina on push

ESP Llave tapa Ondine con pulsador

**REF 107.08.01****REF 3600060-001**

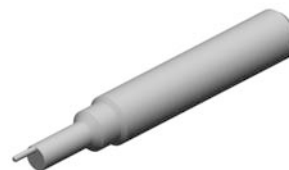
FRA Clé Gyro & Ondine FG - Cromia

DEU Schlüssel für Deckel Gyro & Ondine FG - Cromia

GBR Key for cap Gyro & Ondine FG - Cromia

ITA Chiave testina Gyro & Ondine FG - Cromia

ESP Llave para tapa Gyro & Ondine FG - Cromia

**REF 3600024-001**

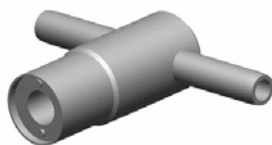
FRA Poussoir corps arrière Lina

DEU Schlüssel für Lina

GBR Key for Lina

ITA Chiave attacco Lina

ESP Llave para Lina

**REF 107.08.02****REF 3600061-001**

FRA Clé pour entretoise BP, Ondine, Bora, Prestige S-30, Eolia

DEU Schlüssel f. Zwischenst. BP, Ondine, Bora, Prest. S-30, Eolia

GBR Key for distance piece BP, Ondine, Bora, Prestige S-30,

ITA Chiave sottocap. BP, Ondine, Bora, Prestige S-30, Eolia

ESP Llave pieza intermedia BP, Ondine, Bora, Prestige S-30,

**REF 3600025-001**

FRA Kit guidage Lina/Bora New

DEU Rörchen Lina/Bora New

GBR Guide's tubes Lina/Bora New

ITA Tubo di guida Lina/Bora New

ESP Tubo Lina/Bora New

**REF 107.08.03****REF 3600062-001**

FRA Outil de montage O-ring Ondine

DEU O-Ring-Setzer Ondine

GBR Tool for mounting O-ring Ondine

ITA Guida O-ring Ondine

ESP Útil de montaje arandela torica

**REF 3600036-001**

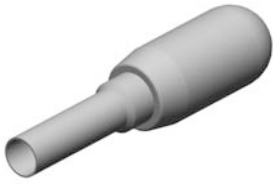
FRA Clé butée arrière Unifix

DEU Schlüssel Unifix

GBR Key Unifix

ITA Chiave attacco Unifix

ESP Llave Unifix

**REF 4600019-001**

FRA Poignée pousse-bague Lina

DEU Traggriff Lina

GBR Handle Lina

ITA Maniglia Lina

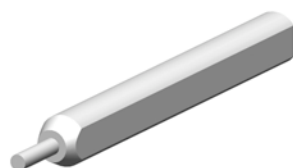
ESP Asa Lina

**REF 007.25.21****REF 3300144-001**

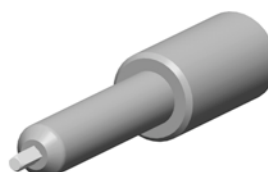
FRA Outil à redresser tête BP, Eolia
 DEU Richtwerkzeug für Kopf BP, Eolia
 GBR Tool for buckling head BP, Eolia
 ITA Alesatore Black Pearl, Eolia
 ESP Llave para redondear cabeza BP, Eolia

**REF 107.25.02****REF 3600068-001**

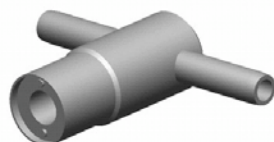
FRA Outil de montage O-ring
 DEU O-Ring-Setzer
 GBR Tool for mounting O-ring
 ITA Guida O-ring
 ESP Útil de montaje arandela

**REF 007.28.39****REF 3300148-001**

FRA Jauge Ø 1.608
 DEU Messbolzen Ø 1.608
 GBR Plug-gauge Ø 1.608
 ITA Asta Ø 1.608
 ESP Calibre tapon Ø 1.608

**REF 207.02.03****REF 1500855-001**

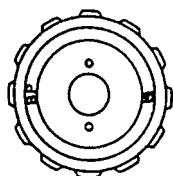
FRA Outil pour pince td-783 et BP-FG
 DEU Werkzeug für TD-783 und BP-FG Spannzange
 GBR Instrument for TD-783 and BP-FG chuck
 ITA Chiave pinza TD/BP-FG
 ESP Tornavis pinza TD-783 e BP-FG

**REF 107.08.02****REF 3600061-001**

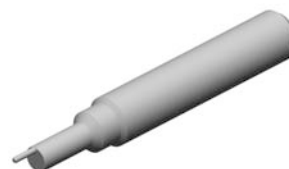
FRA Clé pour entretoise BP, Ondine, Bora, Prestige S-30, Eolia
 DEU Schlüssel f. Zwischenst. BP, Ondine, Bora, Prest. S-30, Eolia
 GBR Key for distance piece BP, Ondine, Bora, Prestige S-30,
 ITA Chiave sottocap. BP, Ondine, Bora, Prestige S-30, Eolia
 ESP Llave pieza intermedia BP, Ondine, Bora, Prestige S-30,

**REF 3600012-001**

FRA Clé couvercle BP, Eolia
 DEU Schlüssel BP Druckknopf, Eolia
 GBR BP cap remover push type, Eolia
 ITA Chiave testina BP push, Eolia
 ESP Llave tapa BP con pulsador, Eolia

**REF 107.25.01****REF 3600067-001**

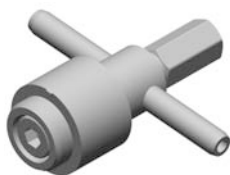
FRA Cle couvercle Black Pearl FG
 DEU Schlüssel für BP Deckel FG
 GBR Key for cartridge cap FG
 ITA Chiave test. Black Pearl FG
 ESP Llave para tapa BP FG

**REF 3600024-001**

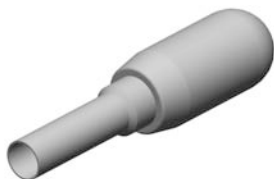
FRA Poussoir corps arrière Lina
 DEU Schlüssel für Lina
 GBR Key for Lina
 ITA Chiave attacco Lina
 ESP Llave para Lina

**REF 3600025-001**

FRA Kit guidage Lina/Bora New
DEU Rörchen Lina/Bora New
GBR Guide's tubes Lina/Bora New
ITA Tubo di guida Lina/Bora New
ESP Tubo Lina/Bora New

**REF 3600036-001**

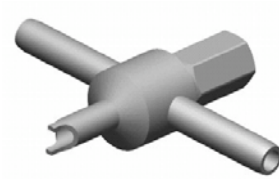
FRA Clé butée arrière Unifix
DEU Schlüssel Unifix
GBR Key Unifix
ITA Chiave attacco Unifix
ESP Llave Unifix

**REF 4600019-001**

FRA Poignée pousse-bague Lina
DEU Traggriff Lina
GBR Handle Lina
ITA Maniglia Lina
ESP Asa Lina

**REF 007.28.38****REF 3300169-001**

FRA Guide fibre
 DEU Faserführung
 GBR Fiber guide
 ITA Guida fibre
 ESP Guia fibra

**REF 107.28.03****REF 3600069-001**

FRA Tournevis pour coude
 DEU Schlüssel für Mutter Kniestück
 GBR Key for fixing screw
 ITA Chiave viti fissaggio gambo
 ESP Llave para codo

**REF 007.28.40****REF 3300149-001**

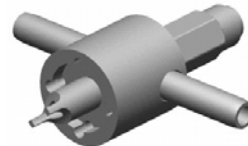
FRA Outil pour redresser tête
 DEU Richtwerkzeug Kopfgehäuse
 GBR Tool for buckling head
 ITA Alesatore testina
 ESP Llave para redondear cabeza

**REF 107.28.10**

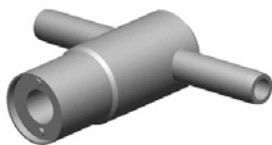
FRA Clé couvercle Bora
 DEU Schlüssel für Deckel Bora
 GBR Bora cap remover
 ITA Chiave cappellotto Bora
 ESP Llave tapa Bora

**REF 007.60.24****REF 3300150-001**

FRA Extracteur diffuseur spray Bora
 DEU Sprayverteilerabzieher Bora
 GBR Spray diffusor extractor Bora
 ITA Estrattore diffusore Bora
 ESP Extractor difusor de spray Bora

**REF 107.60.10-001**

FRA Clé diffuseur spray Ø 1.6 mm
 DEU Werkzeug für Sprayverteiler Ø 1.6 mm
 GBR Spray diffusor key Ø 1.6 mm
 ITA Chiave diffusore spray Ø 1.6 mm
 ESP Llave difusor de spray Ø 1.6 mm

**REF 107.08.02****REF 3600061-001**

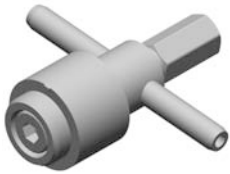
FRA Clé pour entretoise BP, Ondine, Bora, Prestige S-30, Eolia
 DEU Schlüssel f. Zwischenst. BP, Ondine, Bora, Prest. S-30, Eolia
 GBR Key for distance piece BP, Ondine, Bora, Prestige S-30,
 ITA Chiave sottocap. BP, Ondine, Bora, Prestige S-30, Eolia
 ESP Llave pieza intermedia BP, Ondine, Bora, Prestige S-30,

**REF 3600025-001**

FRA Kit guidage Lina/Bora New
 DEU Rörchen Lina/Bora New
 GBR Guide's tubes Lina/Bora New
 ITA Tubo di guida Lina/Bora New
 ESP Tubo Lina/Bora New

**REF 3600035-001**

FRA Ecrou arrière Black Line
DEU Mutter Werkzeug Black Line
GBR Nut Key Black Line
ITA Dado chiave Black Line
ESP Tuerca Llave Black Line

**REF 3600036-001**

FRA Clé butée arrière Unifix
DEU Schlüssel Unifix
GBR Key Unifix
ITA Chiave attacco Unifix
ESP Llave Unifix

**REF 3600037-001**

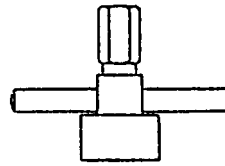
FRA Tournevis (long) Black-Line
DEU Schraubendreher Black-Line
GBR Torque screwdriver Black-Line
ITA Cacciavite dinamometrico Black-Line
ESP Destornillador dinamo Black-Line



REF 007.28.38

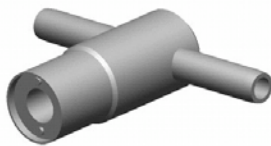
REF 3300169-001

FRA Guide fibre
 DEU Faserführung
 GBR Fiber guide
 ITA Guida fibre
 ESP Guia fibra



REF 107.28.08

FRA Clé pour couvercle
 DEU Schlüssel für Kopfdeckel
 GBR Key for cap
 ITA Chiave cappellotto
 ESP Llave para tapa



REF 107.08.02

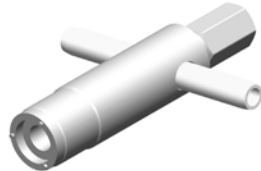
REF 3600061-001

FRA Clé pour entretoise BP, Ondine, Bora, Prestige S-30, Eolia
 DEU Schlüssel f. Zwischenst. BP, Ondine, Bora, Prest. S-30, Eolia
 GBR Key for distance piece BP, Ondine, Bora, Prestige S-30,
 ITA Chiave sottocap. BP, Ondine, Bora, Prestige S-30, Eolia
 ESP Llave pieza intermedia BP, Ondine, Bora, Prestige S-30,



REF 3600025-001

FRA Kit guidage Lina/Bora New
 DEU Rörchen Lina/Bora New
 GBR Guide's tubes Lina/Bora New
 ITA Tubo di guida Lina/Bora New
 ESP Tubo Lina/Bora New



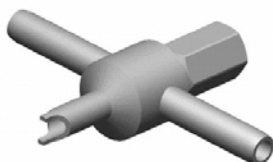
REF 107.28.02

FRA Clé diffuseur spray et entretoise Prestige S32
 DEU Schlüssel f. Wechsel Sprayplatte u. Zw-Stk Prestige S32
 GBR Key for spray diffusor and distance piece Prestige S32
 ITA Chiave diff. spray e sottocap. Prestige S32
 ESP Llave difusor spray y pieza intermedia Prestige S32



REF 3600035-001

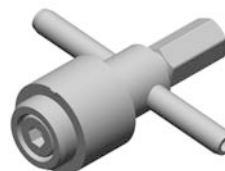
FRA Ecrou arrière Black Line
 DEU Mutter Werkzeug Black Line
 GBR Nut Key Black Line
 ITA Dado chiave Black Line
 ESP Tuerca Llave Black Line



REF 107.28.03

REF 3600069-001

FRA Tournevis pour coude
 DEU Schlüssel für Mutter Kniestück
 GBR Key for fixing screw
 ITA Chiave viti fissaggio gambo
 ESP Llave para codo



REF 3600036-001

FRA Clé butée arrière Unifix
 DEU Schlüssel Unifix
 GBR Key Unifix
 ITA Chiave attacco Unifix
 ESP Llave Unifix

**REF 3600037-001**

FRA Tournevis (long) Black-Line

DEU Schraubendreher Black-Line

GBR Torque screwdriver Black-Line

ITA Cacciavite dinamometrico Black-Line

ESP Destornillador dinamo Black-Line

**REF 007.25.21****REF 3300144-001**

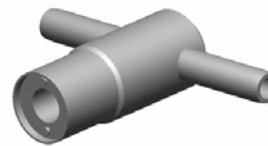
FRA Outil à redresser tête BP, Eolia
 DEU Richtwerkzeug für Kopf BP, Eolia
 GBR Tool for buckling head BP, Eolia
 ITA Alesatore Black Pearl, Eolia
 ESP Llave para redondear cabeza BP, Eolia

**REF 007.28.39****REF 3300148-001**

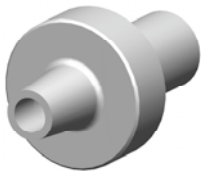
FRA Jauge Ø 1.608
 DEU Messbolzen Ø 1.608
 GBR Plug-gauge Ø 1.608
 ITA Asta Ø 1.608
 ESP Calibre tapon Ø 1.608

**REF 007.25.35-001****REF 3300145-001**

FRA Outil pour déchasser roulement
 DEU Werkzeug zum Ausstossen der Kugellager
 GBR Tool to drive out ball bearing
 ITA Attrezzo per estrazione cuscinetto
 ESP Útil para extraer el cojinete

**REF 107.08.02****REF 3600061-001**

FRA Clé pour entretoise BP, Ondine, Bora, Prestige S-30, Eolia
 DEU Schlüssel f. Zwischenst. BP, Ondine, Bora, Prest. S-30, Eolia
 GBR Key for distance piece BP, Ondine, Bora, Prestige S-30,
 ITA Chiave sottocap. BP, Ondine, Bora, Prestige S-30, Eolia
 ESP Llave pieza intermedia BP, Ondine, Bora, Prestige S-30,

**REF 007.25.36-001****REF 3300146-001**

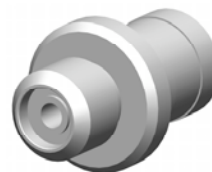
FRA Outil pour déchasser roulement
 DEU Werkzeug zum Ausstossen der Kugellager
 GBR Tool to drive out ball bearing
 ITA Attrezzo per estrazione cuscinetto
 ESP Útil para extraer el cojinete

**REF 107.25.02****REF 3600068-001**

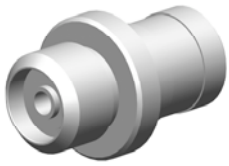
FRA Outil de montage O-ring
 DEU O-Ring-Setzer
 GBR Tool for mounting O-ring
 ITA Guida O-ring
 ESP Útil de montaje arandela

**REF 007.25.41-001****REF 3300147-001**

FRA Outil pour déchasser roulement
 DEU Werkzeug zum Ausstossen der Kugellager
 GBR Tool to drive out ball bearing
 ITA Attrezzo per estrazione cuscinetto
 ESP Útil para extraer el cojinete

**REF 107.25.06-001****REF 3600018-001**

FRA Outil pour déchasser roulement
 DEU Werkzeug zum Ausstossen der Kugellager
 GBR Tool to drive out ball bearing
 ITA Attrezzo per estrazione cuscinetto
 ESP Útil para extraer el cojinete



REF 107.25.07-001 REF 3600019-001

FRA Outil pour déchasser turbine

DEU Werkzeug zum Ausstossen der Turbine

GBR Tool to drive out turbine

ITA Attrezzo per estrazione turbina

ESP Útil para extraer la turbina



REF 930.02.11

FRA Presse pour déchasser roulement et turbine

DEU Presse zum Ausstossen der Kugellager und Turbine

GBR Press to drive out ball bearing and turbine

ITA Pressa per estrazione cuscinetto e turbina

ESP Prensa para extraer el cojinete y la turbina



REF 3600012-001

FRA Clé couvercle BP, Eolia

DEU Schlüssel BP Druckknopf, Eolia

GBR BP cap remover push type, Eolia

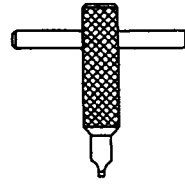
ITA Chiave testina BP push, Eolia

ESP Llave tapa BP con pulsador, Eolia



REF 007.22.05-001 **REF 3300168-001**

FRA Levier extracteur MC2
 DEU Werkzeug f. Kohlefedern MC2
 GBR Extraction tool f/ carbon brus MC2
 ITA Leva estrazione molla carbonci MC2
 ESP Palanca extra. muelle carbon MC2



REF 211.37.02

FRA Ensemble tournevis mc2 sr
 DEU Werkzeug Sprayrohr MC2 SR
 GBR Tool mc2 sr for spraytube
 ITA Chiave tubo spray mc 2
 ESP Destornillador completo mc2 sr



REF 007.23.01 **REF 3300142-001**

FRA Chasse goupille 1.0 mm
 DEU Spannstifthalter 1.0 mm
 GBR Pin punch 1.0 mm
 ITA Chiave spina 1.0 mm
 ESP Desmonta clavija 1.0 mm



REF 930.02.04

FRA Chasse-goupille 1 mm
 DEU Spannstiftsetzer 1 mm
 GBR Pin driver 1 mm
 ITA Chiave spina 1 mm
 ESP Punzon 1 mm



REF 107.22.02 **REF 3600064-001**

FRA Ensemble clé à canon
 DEU 6-Kantschlüssel
 GBR Tool
 ITA Chiave viti contatto
 ESP Llave 6 lados



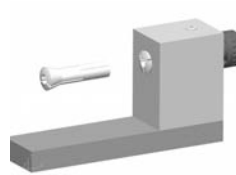
REF 107.55.01

FRA Outil montage/démontage entraineur
 DEU Werkzeug für Mitnehmer
 GBR Tool for dismantling drive-dog
 ITA Apparecchio riparazione mc
 ESP Útil mont desmont pieza arrastre



REF 007.23.01 **REF 3300142-001**

FRA Chasse goupille 1.0 mm
 DEU Spannstifthalter 1.0 mm
 GBR Pin punch 1.0 mm
 ITA Chiave spina 1.0 mm
 ESP Desmonta clavija 1.0 mm



REF 107.55.01

FRA Outil montage/démontage entraineur
 DEU Werkzeug für Mitnehmer
 GBR Tool for dismantling drive-dog
 ITA Apparecchio riparazione mc
 ESP Útil mont desmont pieza arrastre



REF 007.23.02 **REF 3300143-001**

FRA Chasse goupille 1.5 mm
 DEU Spannstifthalter 1.5 mm
 GBR Pin punch 1.5 mm
 ITA Chiave spina 1.5 mm
 ESP Desmonta clavija 1.5 mm



REF 930.02.04

FRA Chasse-goupille 1 mm
 DEU Spannstiftsetzer 1 mm
 GBR Pin driver 1 mm
 ITA Chiave spina 1 mm
 ESP Punzon 1 mm



REF 107.22.04 **REF 3600045-001**

FRA Extracteur roulement MC3
 DEU Kugellager-Auszieher MC3
 GBR Bearing extractor MC3
 ITA Estrattore cuscinetti MC3
 ESP Extractor cojinete MC3



REF 930.02.10

FRA Chasse-goupille Ø 1.5
 DEU Spannstiftsetzer Ø 1.5
 GBR Pin driver Ø 1.5
 ITA Chiave spina Ø 1.5
 ESP Punzon Ø 1.5



REF 107.22.05 **REF 3600065-001**

FRA Outil pour chasser roulements MC3
 DEU Einsetzwerkzeug Kugellager MC3
 GBR Bearing assembly tool for MC3
 ITA Chiave montaggio cuscinetti MC3
 ESP Útil mont. cojinete MC3



REF 3600005-001

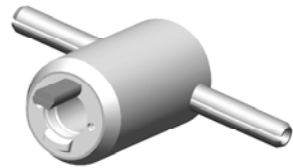
FRA Porte embout à tournevis MC3
 DEU Einsatzhalter für Schraubendreherklingen MC3
 GBR Screwdriver's end for MC3
 ITA Porta-imbuto a cacciavite MC3
 ESP Portaboquilla con destornillador MC3

**REF 3600013-001**

FRA Clé pour dévisser calotte MX
 DEU Schlüssel zum Lösen der Hülse MX
 GBR Key to unscrew the sleeve MX
 ITA Chiave per svitare calotta MX
 ESP Llave para desatornillar tapa MX

**REF 4600674-001**

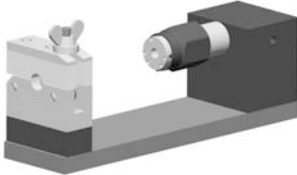
FRA Tige MC MX-LED
 DEU Welle MX-LED
 GBR Shaft MX-LED
 ITA Tubo MX-LED
 ESP Tija MX-LED

**REF 3600014-001**

FRA Clé pour dévisser calotte MX
 DEU Schlüssel zum Lösen der Hülse MX
 GBR Key to unscrew the sleeve MX
 ITA Chiave per svitare calotta MX
 ESP Llave para desatornillar tapa MX

**REF 4600908-001**

FRA Clé pour MX2
 DEU Schlüssel für MX2
 GBR Key for MX2
 ITA Chiave per MX2
 ESP Llave para MX2

**REF 3600038-001**

FRA Posage MX-LED
 DEU MX-LED Stütze
 GBR MX-LED support
 ITA Supporto MX-LED
 ESP Soporte MX-LED

**REF 4500551-001**

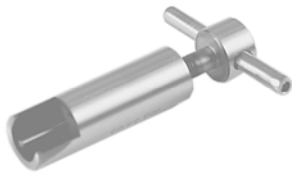
FRA Clé pour MX2 compatible avec posage (3600038-001)
 DEU Schlüssel für MX2 mit Stütze (3600038-001) kompatibel
 GBR Key for MX2 compatible with support (3600038-001)
 ITA Chiave per MX2 compatibile con supporto (3600038-001)
 ESP Llave para MX2 compatible con soporte (3600038-001)

**REF 007.23.02****REF 3300143-001**

FRA Chasse goupille 1.5 mm
 DEU Spannstifthalter 1.5 mm
 GBR Pin punch 1.5 mm
 ITA Chiave spina 1.5 mm
 ESP Desmonta clavija 1.5 mm

**REF 3600027-001**

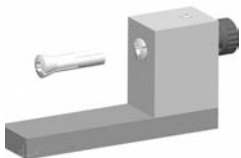
FRA Clé à ergot pour MC BASCH-80K
 DEU Spezialschlüssel MC BACH-80K
 GBR Special Key MC BACH-80K
 ITA Chiave MC BACH-80K
 ESP Llave MC BACH-80K

**REF 107.23.02-001****REF 3600066-001**

FRA Extracteur de roulement pour moteur Basch
 DEU Kugellagerauszieher für Basch
 GBR Bearing extractor Basch
 ITA Estrattore cuscinetti Basch
 ESP Extractor cojinete Basch

**REF 3600028-001**

FRA Clé à ergot pour MC BASCH-80K
 DEU Spezialschlüssel MC BACH-80K
 GBR Special Key MC BACH-80K
 ITA Chiave MC BACH-80K
 ESP Llave MC BACH-80K

**REF 107.55.01**

FRA Outil montage/démontage entraineur
 DEU Werkzeug für Mitnehmer
 GBR Tool for dismantling drive-dog
 ITA Apparecchio riparazione mc
 ESP Útil mont desmont pieza arrastre

**REF 930.02.10**

FRA Chasse-goupille Ø 1.5
 DEU Spannstiftsetzer Ø 1.5
 GBR Pin driver Ø 1.5
 ITA Chiave spina Ø 1.5
 ESP Punzon Ø 1.5

**REF 007.07.24****REF 3300131-001**

FRA Clé réglage serrage PM 1123/32
 DEU Werkzeug Spannvorrichtung PM 1123/32
 GBR Key for chuck adjusting PM 1123/32
 ITA Chiave regolazione serraggio PM 1123/32
 ESP Llave regulacion sujecion PM 1123/32

**REF 007.23.01****REF 3300142-001**

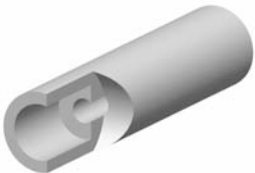
FRA Chasse goupille 1.0 mm
 DEU Spannstifthalter 1.0 mm
 GBR Pin punch 1.0 mm
 ITA Chiave spina 1.0 mm
 ESP Desmonta clavija 1.0 mm

**REF 007.07.26****REF 3300137-001**

FRA Guide outillage arbre
 DEU Führungshülse Achse
 GBR Guide-tool for axle
 ITA Guida utensile alberino
 ESP Guía utillaje arbol

**REF 007.23.02****REF 3300143-001**

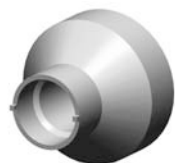
FRA Chasse goupille 1.5 mm
 DEU Spannstifthalter 1.5 mm
 GBR Pin punch 1.5 mm
 ITA Chiave spina 1.5 mm
 ESP Desmonta clavija 1.5 mm

**REF 007.07.27****REF 3300138-001**

FRA Axe-poussoir
 DEU Einsetzwerkzeug f. Seegerring
 GBR Push-piece f/tool
 ITA Posa circlips art.641.09.02
 ESP Eje pulsador

**REF 107.07.07****REF 3600059-001**

FRA Gabarit montage arbre
 DEU Montagewerkzeug-Achse
 GBR Assembly jig for shaft
 ITA Calibro montaggio alberino
 ESP Útil eje

**REF 007.07.35****REF 3300130-001**

FRA Clé réglage serrage PMRM/AM-1122
 DEU Werkzeug Spannvorrichtung PMRM/AM-1122
 GBR Key for chuck adjusting PMRM/AM-1122
 ITA Chiave regolazione serraggio PMRM/AM-1122
 ESP Llave regulacion sujecion PMRM/AM-1122

**REF 107.07.08****REF 3600046-001**

FRA Clé écrou serrage PM-AM 1122
 DEU Schlüssel f Spannmutter PMAM 1122
 GBR Key for tightening nut PM-AM 1122
 ITA Chiave bloccaggio PM-AM 1122
 ESP Llave de bloqueo PM-AM 1122

**REF 107.07.09****REF 3600047-001**

FRA Arrache roulement ext. PM-AM 1122
 DEU Abziehwerkzeug Lager ext. PMAM 1122
 GBR Bearing removing tool ext. PM-AM 1122
 ITA Estrattore cuscinetti ext. PM-AM 1122
 ESP Extractor cojinete ext. PM-AM 1122

**REF 930.02.10**

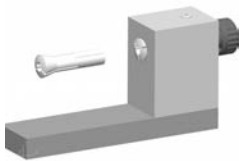
FRA Chasse-goupille Ø 1.5
 DEU Spannstiftsetzer Ø 1.5
 GBR Pin driver Ø 1.5
 ITA Chiave spina Ø 1.5
 ESP Punzon Ø 1.5

**REF 107.07.10****REF 3600048-001**

FRA Arrache roulement int. PM-AM 1122
 DEU Abziehwerkzeug Lager int. PMAM 1122
 GBR Bearing removing tool int. PM-AM 1122
 ITA Estrattore cuscinetti int. PM-AM 1122
 ESP Extractor cojinete int. PM-AM 1122

**REF 1200049-001**

FRA Graisse pour PM divers / UH1 64-62 50g
 DEU Schmierfett für diverse Handstücke / UH1 64-62 50g
 GBR Grease for miscellaneous handpieces / UH1 64-62 50g
 ITA Grasso per vari manipoli / UH1 64-62 50g
 ESP Lubricante para diferentes piezas de mano/UH1 64-62 50 g

**REF 107.55.01**

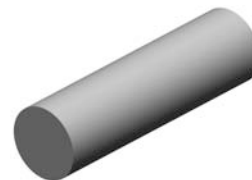
FRA Outil montage/démontage entraineur
 DEU Werkzeug für Mitnehmer
 GBR Tool for dismantling drive-dog
 ITA Apparecchio riparazione mc
 ESP Útil mont desmont pieza arrastre

**REF 3300025-001**

FRA Tige extracteur PMAM 1122 long. 125 mm
 DEU Schaft für Abzieher PMAM 1122 Länge 125 mm
 GBR Extractor pin PMAM 1122 length 125 mm
 ITA Asta estrattore PMAM 1122 lungh. 125 mm
 ESP Tija de extracción PMAM 1122 largo 125 mm

**REF 930.02.04**

FRA Chasse-goupille 1 mm
 DEU Spannstiftsetzer 1 mm
 GBR Pin driver 1 mm
 ITA Chiave spina 1 mm
 ESP Punzon 1 mm

**REF 3300127-001**

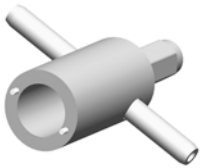
FRA Posage S80 / S120
 DEU PM S80 / S120 Stütze
 GBR PM S80 / S120 Support
 ITA Supporto PM S80 / S120
 ESP Soporte PM S80 / S120

**REF 3500001-001**

FRA Clé pour écrou
 DEU Schlüssel für Mutter Werkzeug
 GBR Key for nut
 ITA Chiave per dado
 ESP Llave para tuerca

**REF 3600020-001**

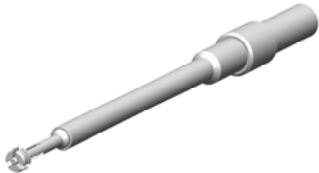
FRA Extracteur roulement PM 1:2
 DEU Kugellager-Auszieher PM 1:2
 GBR Bearing extractor PM 1:2
 ITA Estrattore cuscinetti PM 1:2
 ESP Extractor cojnete PM 1:2

**REF 3600006-001**

FRA Clé à ergot PM 1123
 DEU Hakenschlüssel PM 1123
 GBR Pin wrench PM 1123
 ITA Chiave a griffa PM 1123
 ESP Llave con saliente cilíndrico para tuercas PM 1123

**REF 3600021-001**

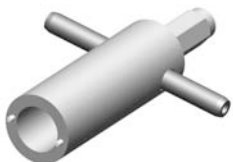
FRA Extracteur de roulement pour PM 1:2
 DEU Kugellager-Auszieher für PM 1:2
 GBR Bearing extractor for PM 1:2
 ITA Estrattore cuscinetti per PM 1:2
 ESP Extractor cojnete para PM 1:2

**REF 3600011-001**

FRA Extracteur roulement PMAM 1122 long. 125 mm
 DEU Kugellager-Auszieher PMAM 1122 Länge 125 mm
 GBR Bearing extractor PMAM 1122 length 125 mm
 ITA Estrattore cuscinetti PMAM 1122 lunghezza 125 mm
 ESP Extractor cojnete PMAM 1122 largo 125 mm

**REF 3600023-001**

FRA Outil plieur
 DEU Werkzeug für biegen
 GBR Bending's tool
 ITA Attezzatura per piegare
 ESP Herramienta para plegar

**REF 3600016-001**

FRA Clé spéciale pour PM 1:2
 DEU Spezialschlüssel für PM 1:2
 GBR Special Key for PM 1:2
 ITA Chiave speciale per PM 1:2
 ESP llave para PM 1:2

**REF 3600026-001**

FRA Clé spéciale pour PM 1:2
 DEU Spezialschlüssel für PM 1:2
 GBR Special Key for PM 1:2
 ITA Chiave speciale per PM 1:2
 ESP Llave para PM 1:2

**REF 3600029-001**

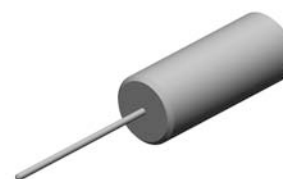
FRA Clé à ergot PM S80
 DEU Spezialschlüssel PM S80
 GBR Special Key PM S80
 ITA Chiave PM S80
 ESP Llave PM S80

**REF 3600041-001**

FRA Posage PM S80 / S120
 DEU PM S80 / S120 Stütze
 GBR PM S80 / S120 Support
 ITA Supporto PM S80 / S120
 ESP Soporte PM S80 / S120

**REF 3600030-001**

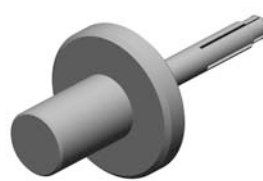
FRA Clé à ergot PM S80
 DEU Spezialschlüssel PM S80
 GBR Special Key PM S80
 ITA Chiave PM S80
 ESP Llave PM S80

**REF 3600042-001**

FRA Manche a-mèche Ø 0.8 mm
 DEU Bohrer Ø 0.8 mm mit Griff
 GBR Handle with bit Ø 0.8 mm
 ITA Punta a spirale Ø 0.8 mm
 ESP Broca Ø 0.8 mm con mango

**REF 3600039-001**

FRA Outil(s) contrôle engr.
 DEU Werkzeug für kontrollieren Getriebe
 GBR Gears tool control
 ITA Attrezzatura per controllare ingranaggio
 ESP Herramienta para comprobar engranaje

**REF 3600043-001**

FRA Extracteur roulement PM S80 / S120
 DEU Kugellager-Auszieher PM S80 / S120
 GBR Bearing extractor PM S80 / S120
 ITA Estrattore cuscinetti PM S80 / S120
 ESP Extractor cojnete PM S80 / S120

**REF 3600040-001**

FRA Extracteur bague PM S80 / S120
 DEU Ring-Auszieher PM S80 / S120
 GBR Ring extractor PM S80 / S120
 ITA Estrattore chiera PM S80 / S120
 ESP Extractor anillo PM S80 / S120



REF 007.07.36-001 **REF 3300139-001**

FRA Outil racleur
 DEU Werkzeug für Reinigung Nase
 GBR Tool for nozzle cleaning
 ITA Chiave per smontaggio
 ESP Es util para limpiar



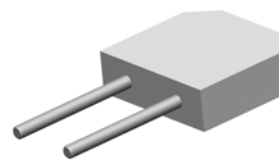
REF 107.07.11-001 **REF 3600049-001**

FRA Clé pour bague repère
 DEU Schlüssel für Markierungsring
 GBR Key for guide mark ring
 ITA Chiave per chiera riferimento
 ESP Llava para anillo de referencia



REF 007.07.37-001 **REF 3300140-001**

FRA Pince pour deserrage
 DEU Zange zum Loesen
 GBR Tool for dismantling
 ITA Chiave per smontaggio
 ESP Útil para desmontar



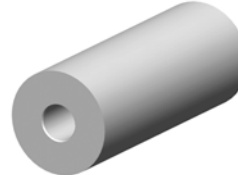
REF 107.07.12-001 **REF 3600050-001**

FRA Clé de blocage
 DEU Festhalte Schlüssel
 GBR Key for blocking
 ITA Chiave di bloccaggio
 ESP Llave de bloqueo



REF 007.07.39-001 **REF 3300132-001**

FRA Clé réglage serrage
 DEU Werkzeug für Spannvorrichtung
 GBR Key for chuck adjusting
 ITA Chiave regolazione serraggio
 ESP Llave regulacion sujecion



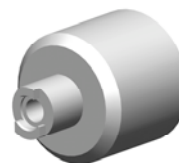
REF 3300004-001

FRA Butée montage circlips
 DEU Anschlag zum Einbauen des Sprengings
 GBR Snap ring fitting thrust stop
 ITA Arresto montaggio anelli di sicurezza
 ESP Tope de montaje de las arandelas de retención



REF 007.63.25-001 **REF 3600055-001**

FRA Tournevis pour tête KaVo 68 LH
 DEU Schraubenzieher mit einsatz für Kopf 68 LH
 GBR Screwdriver for KaVo head 68 LH
 ITA Cacciavite testina KaVo 68 LH
 ESP Destornillador cabeza KaVo 68 LH



REF 3300005-001

FRA Poussoir montage circlips
 DEU Stößel zum Einbauen des Sprengings
 GBR Snap ring fitting pusher
 ITA Spingitore montaggio anelli di sicurezza
 ESP Pulsador de montaje de las arandelas de retención



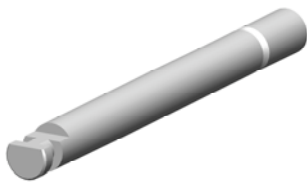
REF 007.60.28 **REF 3300152-001**

FRA Alésoire CA 1121
 DEU Reibahle für Kopf CA 1121
 GBR Reamer for head CA 1121
 ITA Alesatore CA 1121
 ESP Escariador CA 1121



REF 007.63.33 **REF 3300194-001**

FRA Tournevis d 1.8 x 0.45
 DEU Schraubenzieher d 1.8 x 0.45
 GBR Screwdriver d 1.8 x 0.45
 ITA Cacciavite d 1.8 x 0.45
 ESP Destornillador d 1.8 x 0.45



REF 007.63.24 **REF 3300156-001**

FRA Tige d'essai
 DEU Prüfdorn
 GBR Shaft
 ITA Asta di prova
 ESP Clavija de ensayo



REF 007.63.34 **REF 3300195-001**

FRA Tournevis d 2.0
 DEU Schraubenzieher d 2.0
 GBR Screwdriver d 2.0
 ITA Cacciavite d 2.0
 ESP Destornillador d 2.0



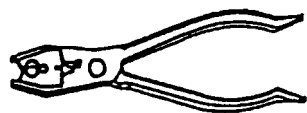
REF 007.63.25-001 **REF 3600055-001**

FRA Tournevis pour tête KaVo 68 LH
 DEU Schraubenzieher mit einsatz für Kopf 68 LH
 GBR Screwdriver for KaVo head 68 LH
 ITA Cacciavite testina KaVo 68 LH
 ESP Destornillador cabeza KaVo 68 LH



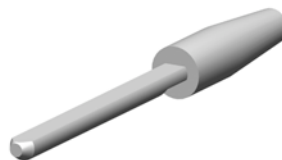
REF 007.63.35 **REF 3300196-001**

FRA Tournevis d 1.5
 DEU Schraubenzieher d 1.5
 GBR Screwdriver d 1.5
 ITA Cacciavite d 1.5
 ESP Destornillador d 1.5



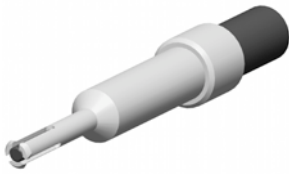
REF 007.63.26 **REF 3300193-001**

FRA Pince multi
 DEU Multifunktionszange
 GBR Multi pliers
 ITA Pinza multifunzioni
 ESP Alicates multi



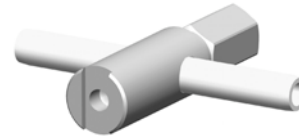
REF 007.63.42 **REF 3300157-001**

FRA Tasseau montage bague seeger tête 68 LDN, 68 LH
 DEU Montagewerkzeug f. Seegerring Kopf 68 LDN, 68 LH
 GBR Stake head 68 LDN, 68 LH
 ITA Chiave montagg. circlips testina 68 LDN, 68 LH
 ESP Eje montaje cabeza 68 LDN, 68 LH



REF 107.07.13-001 REF 3600051-001

FRA Arrache roulement int. CA 1121
 DEU Abziehwerkzeug Lager int. CA 1121
 GBR Bearing removing tool int. CA 1121
 ITA Estrattore cuscinetti int. CA 1121
 ESP Extractor cojinete int. CA 1121



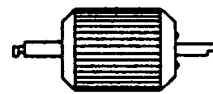
REF 107.60.05-001

FRA Clé CAP (prophy) 15:1 21
 DEU Schlüssel für CAP 15:1 21
 GBR Key CAP 15:1 21 (prophy)
 ITA Chiave CAP 15:1 21
 ESP Llave CAP 15:1 21



REF 107.07.14-001 REF 3600052-001

FRA Arrache roulement ext. CA 1121
 DEU Abziehwerkzeug Lager ext. CA 1121
 GBR Bearing removing tool ext. CA 1121
 ITA Estrattore cuscinetti ext. CA 1121
 ESP Extractor cojinete ext. CA 1121



REF 107.62.02

FRA Clé bague appui CA 111/1121
 DEU Schlüssel Anschlaghuelse CA 111/1121
 GBR Key for adjusting ring CA 111/1121
 ITA Chiave anello d'appoggio CA 111/1121
 ESP Llave anilla de apoyo CA 111/1121



REF 107.60.01-001

FRA Clé diffuseur spray CA Ø 2.35 mm
 DEU Werkzeug für Sprayverteiler CA Ø 2.35 mm
 GBR Spray diffuser key CA Ø 2.35 mm
 ITA Chiave diffusore spray CA Ø 2.35 mm
 ESP Llave difusor de spray CA Ø 2.35 mm



REF 107.62.03

FRA Clé de blocage CA 111/1121
 DEU Werkzeug für Rotorwechsel CA 111/1121
 GBR Tool for rotor change CA 111/1121
 ITA Chiave CA 111/1121
 ESP Llave de bloqueo CA 111/1121



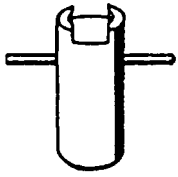
REF 107.60.04-001

FRA Clé pour couvercle CA 1:1/10:1/1:5/Endo
 DEU Schlüssel für Deckel CA 1:1/10:1/1:5/Endo
 GBR Key cap CA 1:1/10:1/1:5/Endo
 ITA Chiave cappelloto CA 1:1/10:1/1:5/Endo
 ESP Llave para tapa CA 1:1/10:1/1:5/Endo



REF 107.62.04

FRA Alesoir CA 111
 DEU Reibahle für Kopf CA 111
 GBR Reamer for head CA 111
 ITA Alesatore CA 111
 ESP Escariador CA 111



REF 107.63.07

FRA Clé CA 1132 tête 68 LDN
 DEU Schlüssel für CA 1132 Kopf 68 LDN
 GBR Key CA 1132 head 68 LDN
 ITA Chiave CA 1132 testina 68 LDN
 ESP Llave CA 1132 cabeza 68 LDN



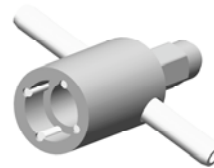
REF 3600023-001

FRA Outil plieur
 DEU Werkzeug für biegen
 GBR Bending's tool
 ITA Attezzatura per piegare
 ESP Herramienta para plegar



REF 3300000-001

FRA Clé pour entretoise contre-angle CA 100:1/30:1/1122
 DEU Schlüssel für Zwischenstück CA 100:1/30:1/1122
 GBR Key for distance piece CA 100:1/30:1/1122
 ITA Chiave pieza intermedia CA 100:1/30:1/1122
 ESP Llave pieza intermedia CA 100:1/30:1/1122



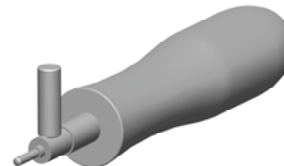
REF 4600196-001

FRA Clé CA 1:122 Medicamat
 DEU Schlüssel CA 1:122 Medicamat
 GBR Key CA 1:122 Medicamat
 ITA Chiave CA 1:122 Medicamat
 ESP Llave CA 1:122 Medicamat



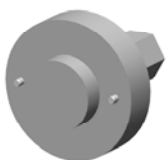
REF 3300029-001

FRA Clé ca 1132/41 tête 68 LH
 DEU Schlüssel für CA 1132/41 Kopf 68 LH
 GBR Key ca 1132/41 head 68 LH
 ITA Chiave ca 1132/41 testina 68 LH
 ESP Llave ca 1132/41 cabeza 68 LH



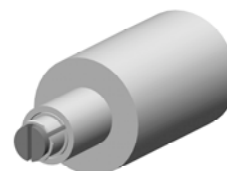
REF 4600260-001

FRA Outil montage diffus. Ø 2.35 mm
 DEU Montagewerkzeug für Diffusor Ø 2.35 mm
 GBR Tool for assembly of diffuser Ø2.35 mm
 ITA Attrezzo montaggio diffusore Ø 2.35 mm
 ESP Útil de montaje del difusor Ø 2,35 mm



REF 3500001-001

FRA Clé pour écrou
 DEU Schlüssel für Mutter Werkzeug
 GBR Key for nut
 ITA Chiave per dado
 ESP Llave para tuerca



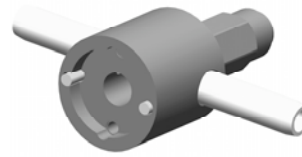
REF 4600264-001

FRA Extracteur roulement CA 1122
 DEU Kugellager-Auszieher CA 1122
 GBR Bearing extractor CA 1122
 ITA Estrattore cuscinetti CA 1122
 ESP Extractor cojinete CA 1122



REF 007.60.25 REF 3300151-001

FRA Outil pour redresser la tête
 DEU Richtwerkzeug für CA rot Kopf
 GBR Tool for buckling head
 ITA Alesatore testina ca rosso
 ESP Útil para redondear cabeza



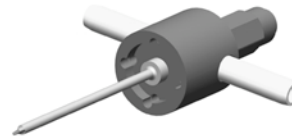
REF 107.60.02

FRA Clé couvercle CA rouge
 DEU Schlüssel für Deckel CA rot
 GBR Red CA cap remover
 ITA Chiave cappello ca rosso
 ESP Llave tapa ca rojo



REF 007.60.36-001 REF 3300153-001

FRA Guide de positionnement rotor cartouche CA 1:4
 DEU Zentrierwerkzeug für CA 1:4 rot
 GBR Positioning tool for red CA 1:4
 ITA Guida di posijonamente per la cartuccias del CA 1:4
 ESP Palanca para CA 1:4



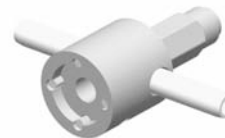
REF 107.60.03-001

FRA Tournevis CA rouge
 DEU Schraubenzieher für CA rot
 GBR Screwdriver for CA red
 ITA Cacciavite CA rosso
 ESP Destornillador para CA rojo



REF 007.63.33 REF 3300194-001

FRA Tournevis d 1.8 x 0.45
 DEU Schraubenzieher d 1.8 x 0.45
 GBR Screwdriver d 1.8 x 0.45
 ITA Cacciavite d 1.8 x 0.45
 ESP Destornillador d 1.8 x 0.45



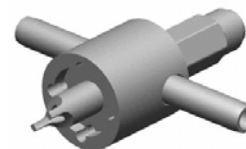
REF 107.60.04-001

FRA Clé pour couvercle CA 1:1/10:1/1:5/Endo
 DEU Schlüssel für Deckel CA 1:1/10:1/1:5/Endo
 GBR Key cap CA 1:1/10:1/1:5/Endo
 ITA Chiave cappello CA 1:1/10:1/1:5/Endo
 ESP Llave para tapa CA 1:1/10:1/1:5/Endo



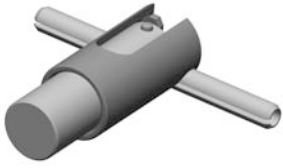
REF 007.63.35 REF 3300196-001

FRA Tournevis d 1.5
 DEU Schraubenzieher d 1.5
 GBR Screwdriver d 1.5
 ITA Cacciavite d 1.5
 ESP Destornillador d 1.5



REF 107.60.10-001

FRA Clé diffuseur spray Ø 1.6 mm
 DEU Werkzeug für Sprayverteiler Ø 1.6 mm
 GBR Spray diffusor key Ø 1.6 mm
 ITA Chiave diffusore spray Ø 1.6 mm
 ESP Llave difusor de spray Ø 1.6 mm

**REF 360023-001**

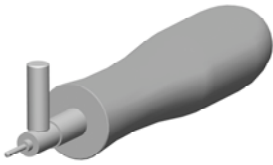
FRA Outil plieur

DEU Werkzeug für biegen

GBR Bending's tool

ITA Attezzatura per piegare

ESP Herramienta para plegar

**REF 4600259-001**

FRA Outil montage diffus. Ø 1.6 mm

DEU Montagewerkzeug für Diffusor Ø 1.6 mm

GBR Tool for assembly of diffusor Ø 1.6 mm

ITA Attrezzo montaggio diffusore Ø 1.6 mm

ESP Útil de montaje del difusor Ø 1,6 mm

**REF 031.29.02-001**

FRA Clé de serrage pour écrou de fixation
 DEU Werkzeug Stiftschraube
 GBR Key for fixing lock ring
 ITA Chiave blocca
 ESP Llave de sujecion

**REF 031.29.04-001**

FRA Outil de contrôle entraineur
 DEU Antriebswelle Werkzeug
 GBR Control drive-shaft
 ITA Asta di controllo forcella
 ESP Clavija de control arrastre

**REF 031.29.06-001**

FRA Pince pour sertir
 DEU Zange
 GBR Pliers for setting
 ITA Pinza
 ESP Alicates para engastar

**REF 031.29.09-001**

FRA Extracteur roulement
 DEU Demontagewerkzeug Kugellager
 GBR Ball bearing removing tool
 ITA Utensile per cuscinetti
 ESP Útil para desmontar cojinetes

**REF 231.29.08-001**

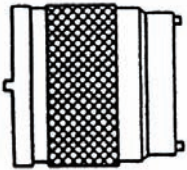
FRA Clé de serrage
 DEU Spezial Schlüssel
 GBR Locking key
 ITA Chiave
 ESP Llave

REF 1000006-001**REF 920.01.61-001**

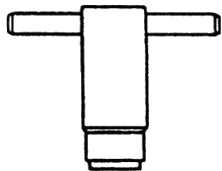
FRA Silicone RTV 118Q
 DEU Silicone RTV 118Q
 GBR Silicone RTV 118Q
 ITA Silicone RTV 118Q
 ESP Silicone RTV 118Q

**REF 021.16.45****REF 3300158-001**

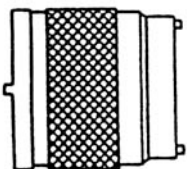
FRA Extracteur de roulement
 DEU Kugellagerabzieher
 GBR Bearing extractor
 ITA Estrat.cusc.Aquilon
 ESP Útil desmonta rodamiento

**REF 221.16.06**

FRA Clé pour écrou arrière 3V-4V
 DEU Demontageschlüssel 3V-4V
 GBR Removing tool 3V-4V
 ITA Chiave corpo pos. 3V-4V
 ESP Útil casquillo 3V-4V

**REF 221.16.08**

FRA Clé pour écrou d'ajustage
 DEU Schlüssel zum Justieren
 GBR Key for adjustment nut
 ITA Chiave d'aggiustamento
 ESP Útil ajustar Aquilon

**REF 221.18.05**

FRA Clé Aquilon Unifix
 DEU Schlüssel Aquilon Unifix
 GBR Removing tool Aquilon Unifix
 ITA Chiave Aquilon Unifix
 ESP Llave Aquilon Unifix



REF 107.66.01-001

FRA Clé pour pédale STS 890 / Prolab
 DEU Schlüssel für Pedal STS 890 / Prolab
 GBR Key for pedal STS 890 / Prolab
 ITA Chiave per pedale STS 890 / Prolab
 ESP Llave para pedal STS 890 / Prolab



REF 4600115-001

FRA Outil contrôle orientation aimant
 DEU Werkzeug zum Ausrichten des Magneten
 GBR Tool to control the magnetic side
 ITA Utensile controllo orientamento magnete
 ESP Herramienta de control de orientación con imán



REF 1000011-001

FRA Clé à fourche 8 mm pour dévisser écrou pince
 DEU Schraubenschlüssel 8 mm für Spannmutter
 GBR Flat spanner 8 mm to unscrew the nut
 ITA Chiave a bocca da 8 mm per svitare dado pinza
 ESP Llave de boca de 8 mm para desatornillar tuercas de pinza



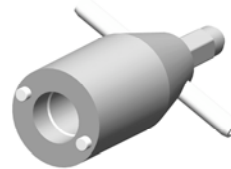
REF 4600121-001

FRA Outil serrage flasque arrière
 DEU Werkzeug zum Spannen des hinteren Flansches
 GBR Tool to screw back flange
 ITA Utensile serraggio flangia posteriore
 ESP Herramienta de ajuste de la carcasa trasera



REF 1000014-001

FRA Outil pour montage teflon
 DEU Teflon-Montagewerkzeug
 GBR Tool to mount teflon
 ITA Utensile per montaggio teflon
 ESP Herramienta para el montaje de teflón



REF 4600143-001

FRA Clé pour moteur Prolab
 DEU Schlüssel Prolab Motor
 GBR Key for Prolab motor
 ITA Chiave micromotore
 ESP Llave motor Prolab

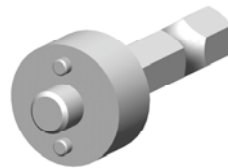


REF 4600106-001

FRA Outil pour devissier partie PM du moteur
 DEU WZ zum Abschrauben des handstückseitigen Motorteils
 GBR Tool to unscrew PM from motor
 ITA Utensile per svitare parte manipolo micromotore
 ESP Herramienta para desatornillar la parte de la pieza de mano

**REF 3300017-001**

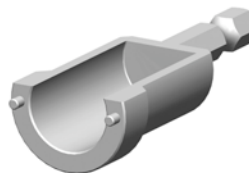
FRA Clé 6p. 14 mm
 DEU Schlüssel 6p 14 mm
 GBR Key 6p. 14 mm
 ITA Chiave 6p 14 mm
 ESP Llave 6p 14 mm

**REF 3600007-001**

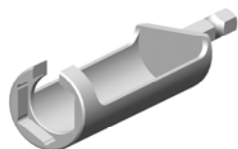
FRA Clé à ergot
 DEU Hakenschlüssel
 GBR Pin wrench
 ITA Chiave a griffa
 ESP Llave con saliente cilíndrico para tuercas

**REF 3300018-001**

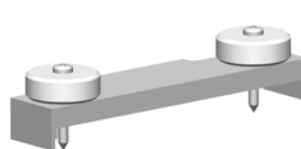
FRA Clé 6p. 17 mm
 DEU Schlüssel 6p 17 mm
 GBR Key 6p. 17 mm
 ITA Chiave 6p 17 mm
 ESP Llave 6p 17 mm

**REF 3600008-001**

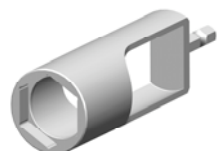
FRA Clé à ergot
 DEU Hakenschlüssel
 GBR Pin wrench
 ITA Chiave a griffa
 ESP Llave con saliente cilíndrico para tuercas

**REF 3300021-001**

FRA Clé 6p. 17 mm
 DEU Schlüssel 6p 17 mm
 GBR Key 6p. 17 mm
 ITA Chiave 6p 17 mm
 ESP Llave 6p 17 mm

**REF 3600009-001**

FRA Outil décollage pédale
 DEU Werkzeug zum Herauslösen des Pedals
 GBR Pedal separation tool
 ITA Utensile stacco pedale
 ESP Herramienta para despegar el pedal

**REF 3300022-001**

FRA Clé 6p. 24 mm
 DEU Schlüssel 6p 24 mm
 GBR Key 6p. 24 mm
 ITA Chiave 6p 24 mm
 ESP Llave 6p 24 mm

**REF 3300033-001**

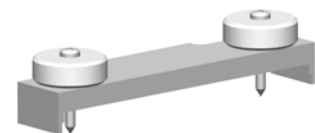
FRA Clé pour Osseostap
 DEU Schlüssel für Osseostap
 GBR Key for Osseostap
 ITA Chiave per Osseostap
 ESP Llave para Osseostap

**REF 3600054-001**

FRA Clé pour Osseostap
 DEU Schlüssel für Osseostap
 GBR Key for Osseostap
 ITA Chiave per Osseostap
 ESP Llave para Osseostap

**REF 3300223-001**

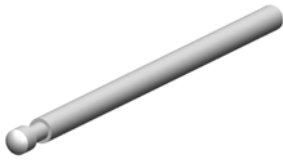
FRA Clé pour Osseostap
 DEU Schlüssel für Osseostap
 GBR Key for Osseostap
 ITA Chiave per Osseostap
 ESP Llave para Osseostap

**REF 3600009-001**

FRA Outil décollage pédale
 DEU Werkzeug zum Herauslösen des Pedals
 GBR Pedal separation tool
 ITA Utensile stacco pedale
 ESP Herramienta para despegar el pedal

**REF 3600053-001**

FRA Clé pour câble Osseostap
 DEU Schlüssel für Osseostap-Kabel
 GBR Key for cable Osseostap
 ITA Chiave per cavo Osseostap
 ESP Llave para cable Osseostap

**REF 007.61.12****REF 3300154-001**

FRA Tige de contrôle Ø 2.35

DEU Prüfdorn Ø 2.35

GBR Shaft Ø 2.35

ITA Asta di prova Ø 2.35

ESP Clavija de ensayo Ø 2.35

**REF 107.24.08****REF 1600307-001**

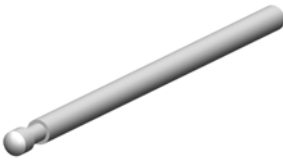
FRA Débitmètre moteur

DEU Durchflussmesser für Motor

GBR Flow meter for motor

ITA Flussimetro per motore

ESP Debimetro de aire para motor

**REF 007.61.14****REF 3300155-001**

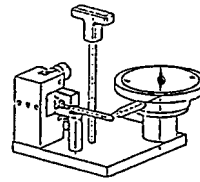
FRA Tige de contrôle Ø 2.30

DEU Prüfdorn Ø 2.30

GBR Shaft Ø 2.30

ITA Asta di prova Ø 2.30

ESP Clavija de ensayo Ø 2.30

**REF 107.59.01**

FRA Outil réglage jeu axial rotor S-32

DEU Werkzeug zum Axialspiel S-32

GBR Tool for adjusting axial play S-32

ITA Apparecchio rip. Prestige S-32

ESP Útil reg. juego axial rotor S-32

**REF 107.24.02****REF 1600245-001**

FRA Thermomètre pour autoclave

DEU Thermometer für Autoklav

GBR Autoclave thermometer

ITA Termometro per autoclave

ESP Termometro para autoclave

**REF 107.59.02-001****REF 3600000-001**

FRA Appareil pour contrôler couple

DEU Drehmoment-Kontrollgerät

GBR Instrument to control the torque

ITA Apparecchio di controllo della coppia

ESP Aparato control fuerzas

**REF 107.24.03**

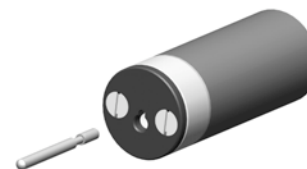
FRA Simulateur de charge

DEU Belastungssimulator

GBR Pretenter

ITA Simulatore di carica

ESP Simulador de carga

**REF 107.61.01**

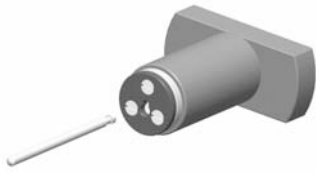
FRA Jauge dynamométrique CA 1:4/1:5

DEU Spannprüfvorrichtung CA 1:4/1:5

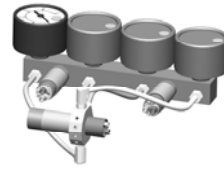
GBR Chuck holding gauge CA 1:4/1:5

ITA Controllo tenuta pinza CA 1:4/1:5

ESP Dinamometro para control sujecion fresa CA 1:4/1:5

**REF 107.61.02**

FRA Jauge dynamométrique PM 2,35 mm
 DEU Spannprüfvorrichtung PM 2,35 mm
 GBR Chuck holding gauge PM 2,35 mm
 ITA Controllo tenuta pinza PM 2,35 mm
 ESP Dinamometro para control sujecion fresa PM 2,35 mm

**REF 190.27.01-001**

FRA Mano 4 contrôles
 DEU Prüfmanometer für 4-fache Kontrolle
 GBR 4-function controlling gauge
 ITA Manometro 4 controlli
 ESP Manómetro de 4 controles

**REF 107.70.02****REF 3800002-001**

FRA Rack de contrôle
 DEU Rack für Gangkontrolle
 GBR Control rack
 ITA Rack per controllo
 ESP Rack de verificación

**REF 720.01.06**

FRA Compte tours moviport
 DEU Drehzahlmesser
 GBR Revolution counter
 ITA Conta giri moviport
 ESP Cuenta revoluciones

**REF 190.16.01****REF 1600242-001**

FRA Manomètre pour raccord 3 voies
 DEU Manometer für 3-Loch-Anschluss
 GBR Gauge for 3-hole attachment
 ITA Manometro per attacco 3 vie
 ESP Manómetro para conexión 3 orificios

**REF 720.01.15**

FRA Appareil pour contrôler lumière
 DEU Lichtkontrollgerät
 GBR Instrument to control the light
 ITA Apparecchio di controllo della luce
 ESP Aparato control luz

+ posage / Stütze / support / supporto / soporte

Gyro 3SL REF 007.59.60

Gyro TL REF 007.59.61

Black Pearl REF 007.59.62

Ondine REF 007.59.63

Prestige REF 007.59.64

Bora REF 007.59.65

CA bleu-vert 1:5 REF 007.59.66

CA rouge 1:4 REF 007.59.67

CAP REF 207.59.30

**REF 190.18.01****REF 1600243-001**

FRA Manomètre pour raccords 4 voies
 DEU Manometer für 4-Loch-Anschluss
 GBR Gauge for 4-hole attachments
 ITA Manometro per attacco 4 vie
 ESP Manómetro para conexión 4 orificios

**REF 720.01.16**

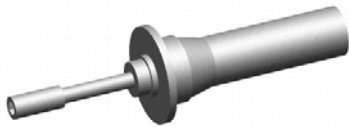
FRA Multimètre numérique

DEU Numerisches Voltmeter

GBR Voltmeter numeral

ITA Multimètre numérique

ESP Multimètre numérique

**REF 930.02.05**

FRA Tournevis dynamométrique (0-100 cNm)

DEU Schraubenzieher Dynamometr. (0-100 cNm)

GBR Torque screwdriver (0-100 cNm)

ITA Cacciavite dinamometrico (0-100 cNm)

ESP Destornillador dinamo (0-100 cNm)

**REF 3300015-001**

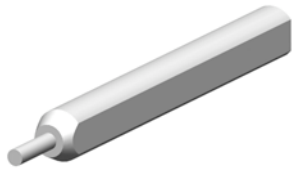
FRA Tournevis dynamométrique (0-250 cNm)

DEU Schraubenzieher Dynamometr. (0-250 cNm)

GBR Torque screwdriver (0-250 cNm)

ITA Tournevis dynamométrique (0-250 cNm)

ESP Tournevis dynamométrique (0-250 cNm)



REF 007.28.39

REF 3300148-001

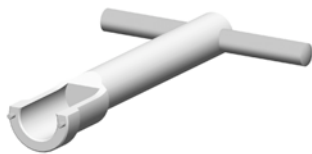
FRA Jauge Ø 1.608
 DEU Messbolzen Ø 1.608
 GBR Plug-gauge Ø 1.608
 ITA Asta Ø 1.608
 ESP Calibre tapon Ø 1.608



REF 920.01.24

REF 1200118-001

FRA Vaseline pure
 DEU Reine Vaseline
 GBR Pure Vaseline
 ITA Vaseline puro
 ESP Vaselina pura



REF 107.21.01

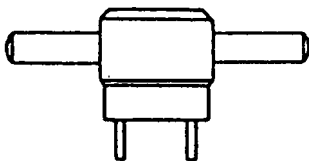
REF 3300063-001

FRA Clé complète ORL 92/921/922
 DEU Schlüssel ORL 92/921/922
 GBR Key ORL 92/921/922
 ITA Chiave ORL 92/921/922
 ESP Llave ORL 92/921/922



REF 930.02.06

FRA Marteau
 DEU Hammer
 GBR Hammer
 ITA Martelletto
 ESP Martillo



REF 107.28.07

REF 3600070-001

FRA Clé pour manchon Flex
 DEU Schlüssel Griff-Hülse Flex
 GBR Key for sleeve handle Flex
 ITA Chiave gambo term.unifix Flex
 ESP Llave para cuerpo mango Flex



REF 930.02.07

REF 5901320-001

FRA Brosse métallique à main
 DEU Drahtbürste
 GBR Hand metallic brush
 ITA Spazzola di ferro a mano
 ESP Cepillo metalico a mano



REF 107.66.01-001

FRA Clé pour pédale STS 890 / Prolab
 DEU Schlüssel für Pedal STS 890 / Prolab
 GBR Key for pedal STS 890 / Prolab
 ITA Chiave per pedale STS 890 / Prolab
 ESP Llave para pedal STS 890 / Prolab



REF 930.02.08

FRA Sonde simple pointe INOX
 DEU Sonde INOX
 GBR Single ended stainless probe
 ITA Sonda semplice punta INOX
 ESP Sonda con punta simple INOX



REF 930.02.09

FRA Enclume acier
 DEU Amboss
 GBR Steel stake
 ITA Incudine d'acciaio
 ESP Bloque acero



REF 1200202-001

FRA Graisse STRUB HTP
 DEU Schmierfett STRUB HTP
 GBR Grease STRUB HTP
 ITA Grasso STRUB HTP
 ESP Lubricante STRUB HTP



REF 1200049-001

FRA Graisse pour PM divers / UH1 64-62 50g
 DEU Schmierfett für diverse Handstücke / UH1 64-62 50g
 GBR Grease for miscellaneous handpieces / UH1 64-62 50g
 ITA Grasso per vari manipoli / UH1 64-62 50g
 ESP Lubricante para diferentes piezas de mano/UH1 64-62 50 g



REF 1600037-006

FRA Graisse médicale Lubrimec, boîte de 6 cartouches
 DEU Lubrimec medizinisches Schmiermittel, Packung zu 6
 GBR Lubrimec medical grease cartridges, box of 6 cartridges
 ITA Lubrimec, conf. da 6 cartucce
 ESP Grasa médica Lubrimec, caja de 6 unidades



REF 1200082-001

FRA Silicone RTV, transparent
 DEU Silikon RTV, transparent
 GBR Silicone RTV, transparent
 ITA Silicone RTV, trasparente
 ESP Silicone RTV, transparente



REF 3300001-001

FRA Gomme
 DEU Gummi
 GBR Gum
 ITA Gomma
 ESP Goma



REF 1200083-001

FRA Pâte Molykote blanche DX
 DEU Paste Molykote DX, weiss
 GBR Paste Molykote DX, white
 ITA Pasta Molykote bianca DX
 ESP Pasta Molykote blanca DX



REF 3300102-001

FRA Alimentation de laboratoire 32V
 DEU Stromquelle 32V
 GBR Power supply 32V
 ITA Alimentatore 32V
 ESP Alimentacion 32V

**REF 3300104-001**

FRA Posage universel

DEU Stütze

GBR Support

ITA Supporto

ESP Soporte

**REF 3300105-001**

FRA Pince ø 6mm

DEU Spannzange ø 6mm

GBR Chuck ø 6mm

ITA Pinza ø 6mm

ESP Pinza ø 6mm

**REF 3300106-001**

FRA Brucelle

DEU Kornzange

GBR Tweezer

ITA Pinzetta a molla

ESP Brucela

**REF 3600022-001**

FRA Set outillage SAV

DEU Ausrüstung kit

GBR Steel rods holder set

ITA Utensili di equipaggiamento

ESP Kit utillaje

**REF 107.54.02**

FRA Loctite 222 6 ml
 DEU Loctite 222 6 ml
 GBR Loctite 222 6 ml
 ITA Loctite 222 6 ml
 ESP Loctite 222 6 ml

**REF 920.01.23**

FRA Loctite 222 50 ml
 DEU Loctite 222 50 ml
 GBR Loctite 222 50 ml
 ITA Loctite 222 50 ml
 ESP Loctite 222 50 ml

REF 1200056-001**REF 107.54.04-001**

FRA Loctite 241 6 ml
 DEU Loctite 241 6 ml
 GBR Loctite 241 6 ml
 ITA Loctite 241 6 ml
 ESP Loctite 241 6 ml

**REF 920.01.56**

FRA Loctite 542 50 ml
 DEU Loctite 542 50 ml
 GBR Loctite 542 50 ml
 ITA Loctite 542 50 ml
 ESP Loctite 542 50 ml

REF 1200064-001**REF 920.01.12**

FRA Loctite 495 50 ml
 DEU Loctite 495 50 ml
 GBR Loctite 495 50 ml
 ITA Loctite 495 50 ml
 ESP Loctite 495 50 ml

REF 1200063-001**REF 920.01.60**

FRA Loctite 243 50 ml
 DEU Loctite 243 50 ml
 GBR Loctite 243 50 ml
 ITA Loctite 243 50 ml
 ESP Loctite 243 50 ml

REF 1200060-001**REF 920.01.14**

FRA Loctite 603 50 ml
 DEU Loctite 603 50 ml
 GBR Loctite 603 50 ml
 ITA Loctite 603 50 ml
 ESP Loctite 603 50 ml

REF 1200066-001**REF 1200057-001**

FRA Loctite 241 50 ml
 DEU Loctite 241 50 ml
 GBR Loctite 241 50 ml
 ITA Loctite 241 50 ml
 ESP Loctite 241 50 ml

**REF 1200069-001**

FRA Loctite 932 50 ml
DEU Loctite 932 50 ml
GBR Loctite 932 50 ml
ITA Loctite 932 50 ml
ESP Loctite 932 50 ml

**REF 1200205-001**

FRA Loctite 272 50 ml
DEU Loctite 272 50 ml
GBR Loctite 272 50 ml
ITA Loctite 272 50 ml
ESP Loctite 272 50 ml

**REF 1200363-001**

FRA Loctite 638 50 ml
DEU Loctite 638 50 ml
GBR Loctite 638 50 ml
ITA Loctite 638 50 ml
ESP Loctite 638 50 ml

Bien-Air Dental SA

Länggasse 60
Case postale
2500 Bienne 6, Switzerland
Tel. +41 (0)32 344 64 64
Fax +41 (0)32 344 64 91
office@bienair.com

**Bien-Air
Deutschland GmbH**

Jechtinger Strasse 11
79111 Freiburg, Deutschland
Tel. +49 (0)761 45 57 40
Fax +49 (0)761 47 47 28
ba-d@bienair.com

Bien-Air España, SA

Entença, 169 Bajos
08029 Barcelona, España
Tel. +34 934 25 30 40
Fax +34 934 23 98 60
ba-e@bienair.com

Bien-Air USA, Inc.

Medical Technologies
5 Corporate Park
Suite 160
Irvine, CA 92606 USA
Phone 1-800-433-BIEN
Phone 949-477-6050
Fax 949-477-6051
ba-usa@bienair.com

Bien-Air France Sàrl

55-57, avenue Jean Lolive
93508 Pantin Cedex, France
Tel. +33 (0)1 41 83 60 70
Fax +33 (0)1 48 96 07 40
ba-f@bienair.com

Bien-Air Italia s.r.l.

Via Vaina 3
20122 Milano, Italia
Tel. +39 (02) 58 32 12 51/52/54
Fax +39 (02) 58 32 12 53
ba-i@bienair.com

Bien-Air UK Limited

63, The Street
Capel, Surrey RH5 5JZ, England
Tel. +44 (0)1306 711 303
+44 (0)1306 712 505
Fax +44 (0)1306 711 444
ba-uk@bienair.com

Bien-Air Asia Ltd.

Nishi-Ikebukuro
Daiichi-Seimei Bldg. 10F
2-40-12 Ikebukuro, Toshimaku
Tokyo, 171-0014, Japan
ビエン・エア・アジア株式会社
〒171-0014
東京都豊島区池袋2-40-12
西池袋第一生命ビルディング10F

Tel. +81 (3) 5954-7661
Fax +81 (3) 5954-7660
ba-asia@bienair.com

Beijing Bien-Air

Medical Instruments
Technology Service Co. Ltd.
Room 2106, The Exchange Beijing
Yi 118 Jianguo Road
Chaoyang District
Beijing 100022, China

北京彼岸医疗器械
技术服务有限公司
北京市朝阳区建国路
乙118号招商局中心
京汇大厦2106室

Tel. +86 10 6567 0651
Fax +86 10 6567 8047
ba-beijing@bienair.com