

FAILURE "ALARM ERROR FAN IN THE SENSOR BOX"

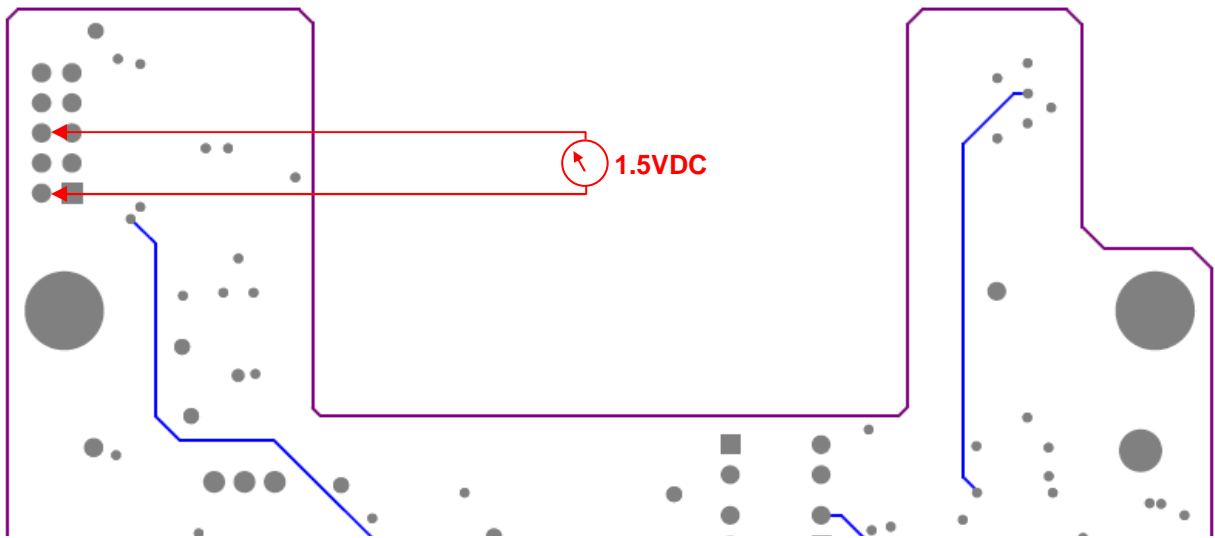
After a replacing of the Prepositive Sensor Board, of the Fan or of the Sensor Board, it may happen that the alarm "Alarm Error Fan in the Sensor Box" appears continuously or again and again for a short time.

In this case the voltage on Pin 2 of the connector J1 on the Sensor Board has to be readjusting to 1.5VDC with help of the potentiometer VR1.

Board Layout Sensor Board (soldering side)

Please check the voltage with a voltmeter on these two pins. It should be 1.5VDC, if not you have to readjust it with the potentiometer VR1.

Important! Do not make a short circuit with other pins!



Board Layout Sensor Board (component side)

