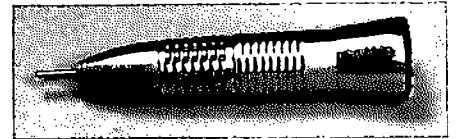


I S - 6 5

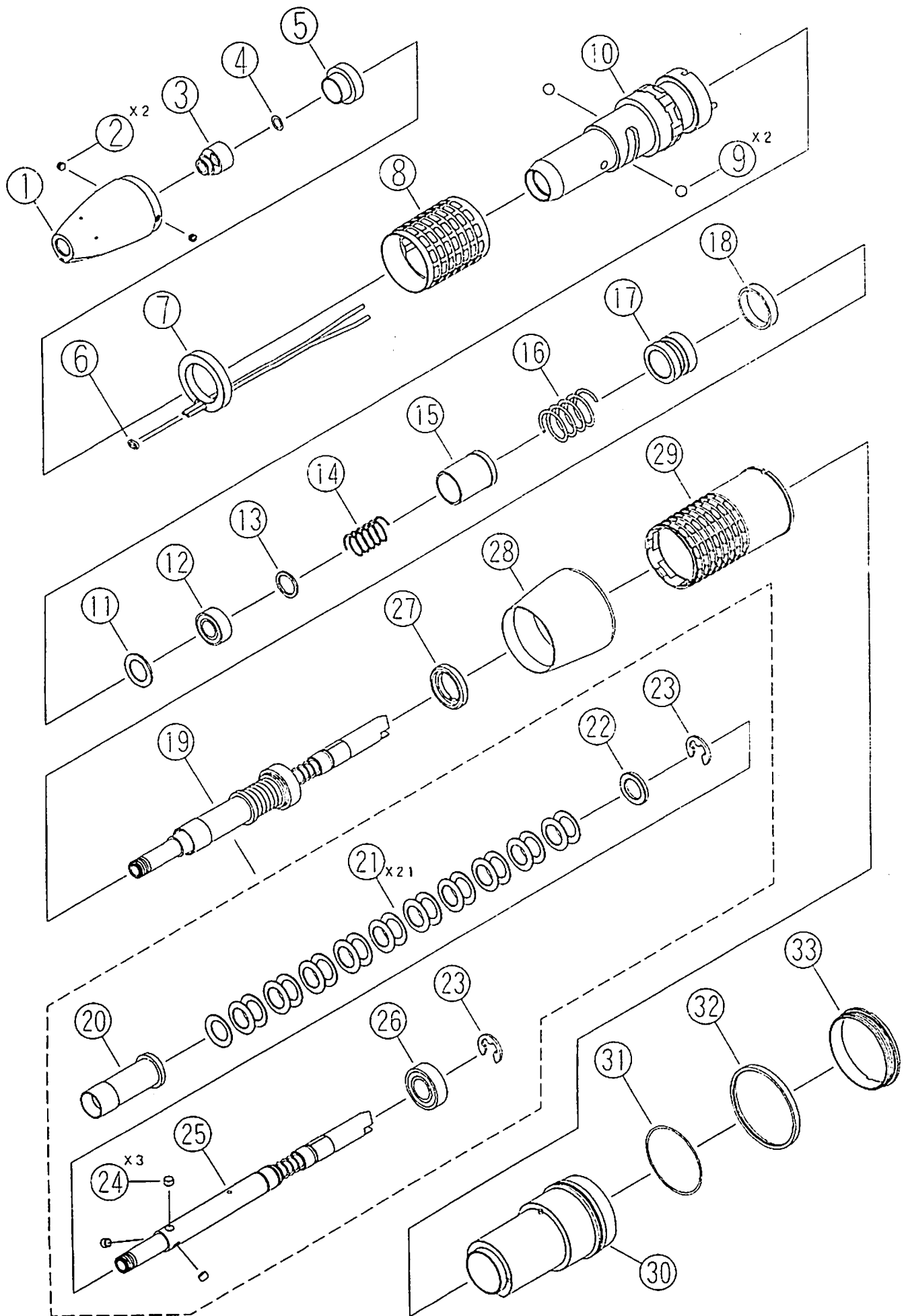


LIST-1

No	PARTS No	DISCRIPTION	QUANT'	REMARK
1	H 1 3 2 1 0 1	Nose Hood	1	
2	R20101-1720	Nose Screw	2	
3	H 1 1 5 2 0 5	Spindle Cap	1	
4	0312-023060	Dust Seal O-Ring	1	
5	H 1 1 5 2 0 6	Dust Seal Washer	1	
6	C 8 3 4 3 4 0	Water, Chip Gasket	1	
7	H 1 3 2 0 2 0	Water Chip Pipe Ass'y	1	
8	H 1 3 2 1 5 2	Bur Lock Ring	1	
9	060111-2380	Ball	2	
10	H 1 3 2 0 1 1	Body	1	
11	H 1 1 5 A 3 1 3	Bearing Replace Washer	1	
12	B13213-0804	F. Bearing	1	
13	H 0 8 3 A 1 6 5	Preload SP Washer	1	
14	H 1 1 5 A 2 5 8	Preload Spring	1	
15	H 1 3 2 2 1 2	Bearing Retainer	1	
16	M 0 7 3 1 5 7	Balancing Spring	1	
17	H 1 1 5 1 5 6	Slide Ring	1	
18	M 0 7 3 1 7 4	R Bearing Washer	1	
19	H 1 1 6 B 0 1 2	Spindle Ass'y	1	
20	M 0 7 3 1 8 3	Bur Holder Pusher	1	
21	H 1 1 5 B 1 9 0	Chuck Spring	2 1	
22	H 1 1 5 B 1 3 4	Ring Cover	1	
23	05021-05000	Retaining Ring	2	
24	M 0 7 3 1 9 7	Bur Holder	3	
25	H 1 1 6 A 0 1 3	Spindle Sub Ass'y	1	
26	B10321-1005	R. Bearing	1	
27	M 1 2 0 A 1 7 1	Spindle Retaining Screw	1	
28	H 1 3 2 6 0 1	Rear Cover	1	

D - 0 5 0 - 0 1

No	PARTS No	DISCRIPTION	QUANT'	REMARK
29	H132310	Sleeve Sheath	1	
30	H132030	E-type Joint Holder	1	
31	0312-160050	Rear Cover O-Ring	1	
32	C834605	Color Ring	1	
33	C834602	Ring Retaining Nut	1	



D-050-03