

XP Series  
CARD1XP1X Program  
Upgrade Procedure  
[2nd edition]

**Table of Contents**

1 Outline..... 3

1.1 System configuration ..... 3

1.2 Requirements ..... 3

2 Upgrade procedure ..... 4

2.1 Setting up XP main unit ..... 4

2.2 Setting up the PC..... 5

2.3 Starting program upgrade ..... 7

2.4 Completing program upgrade ..... 8

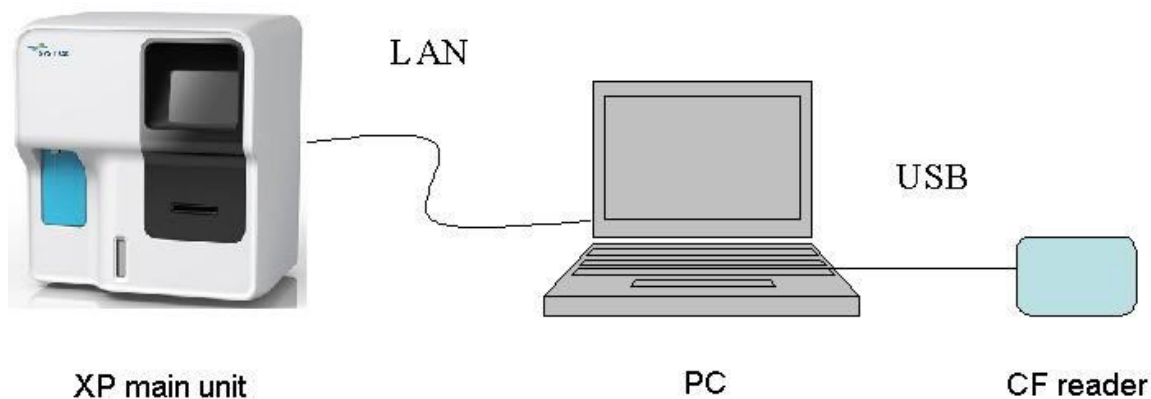
2.5 Checking program upgrade results ..... 9

# 1 Outline

The following is the procedure to upgrade XP Series program.

Using a dedicated upgrade tool (CF reader), the program upgrade will be sent from the PC to the XP main unit via LAN and will be written in the CF card that is inserted in the XP main unit.

## 1.1 System configuration



## 1.2 Requirements

Name	Description
XP main unit	Instrument with program to be upgraded
CARD1XP1X Ver.00-XX	XP Program CF card
PC (Windows-XP or higher)	Sends program in the CF card to XP main unit.
LAN cable	Connects the XP main unit and the PC.
CF card reader	Connects to the PC and reads content of the CF card.

## 2 Upgrade procedure

### 2.1 Setting up XP main unit

1. Switch off the wireless LAN on your computer
2. Connect the XP main unit (LAN port for HC) and the PC with a LAN cable
3. Start the XP main unit using Hot Start (\*1) to enter the service mode.

(\*1) How to use Hot Start

- 1) Turn ON the power switch. After "Sysmex" logo is displayed on the LCD screen, XP series splash screen will appear.
  - 2) Press and hold the Start switch while the XP series splash screen is being displayed.
  - 3) After a while, the XP series splash screen will disappear and the screen will turn white. When an alarm (beep) sounds, let go of the Start switch.
  - 4) If a Hot Start fails, press [C] -> [9] -> [-] -> [0] -> [Enter] on the sample number keypad of the menu screen to switch to the service mode.
4. Go to [Menu] -> [Settings] -> [Network] -> the instrument's screen.

Out/Del [ Not Ready ] Top

[ Network ]

IP Address

192 168 0 100

Network Mask

255 255 255 0

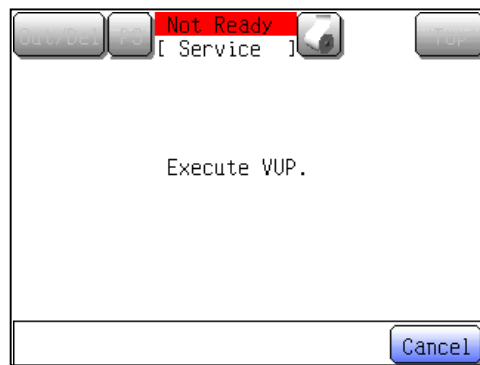
Default Gateway

0 0 0 0

MAC Address 00 06 6B 01 DA F6

← → Save

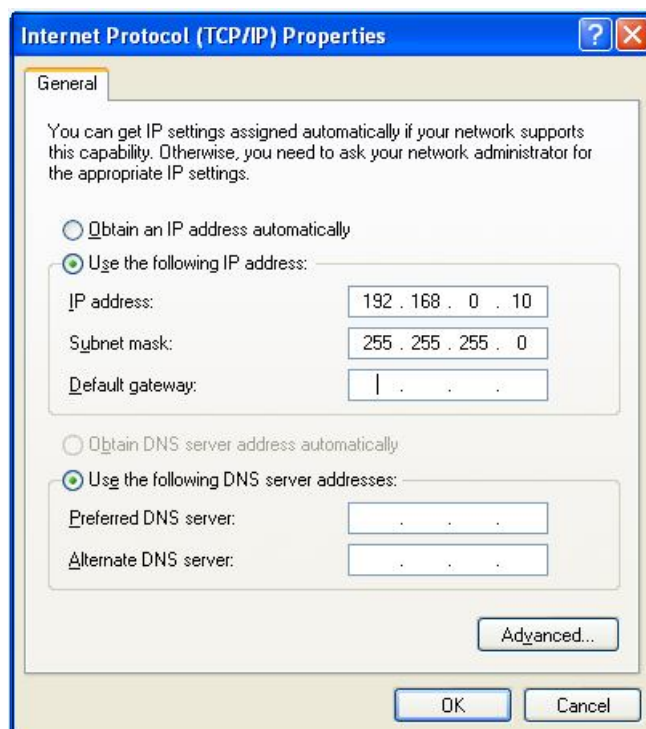
5. Write down the IP address. (This is to restore the IP address after this program upgrade is completed.)
6. Set the instrument's IP address to [192.168.0.100] and save.
7. Go to [Menu] -> [Service] -> [VUP].



## 2.2 Setting up the PC

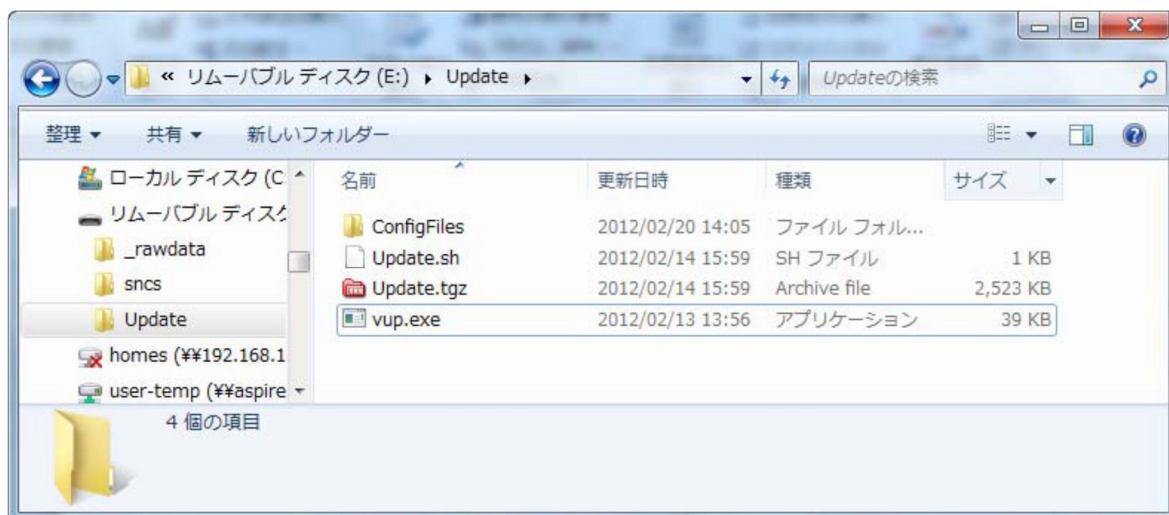
1. Connect the CF card reader to the USB terminal of the PC.
2. Set the PC's IP address to [192.168.0.10].

e.g.) Go to Start -> Control Panel -> Network Connections. Right-click on Local Area Connection and select Properties. Select Internet Protocol (TCP/IP) and set IP address.

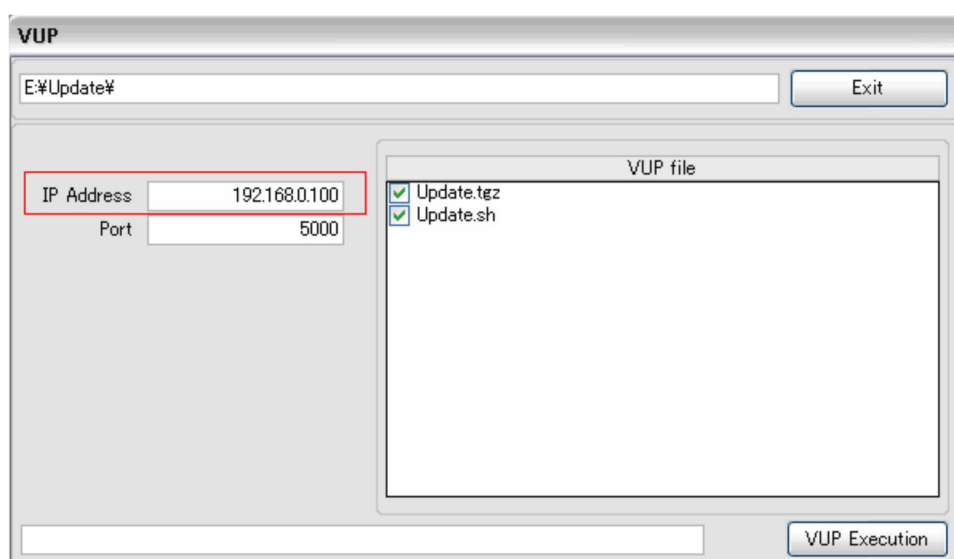


3. Insert "CARD1XP1X Ver.00-XX" (for program upgrade) into the CF card reader.

4. Open the "Update" folder (the drive for CF) added to the PC.

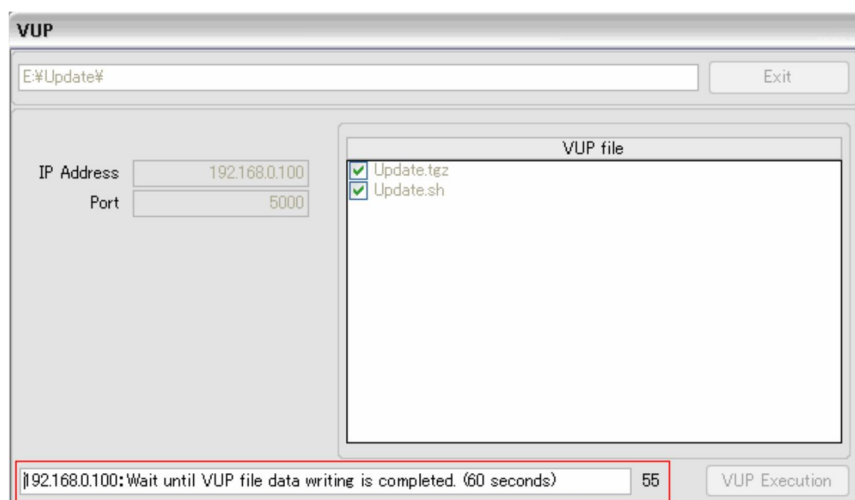
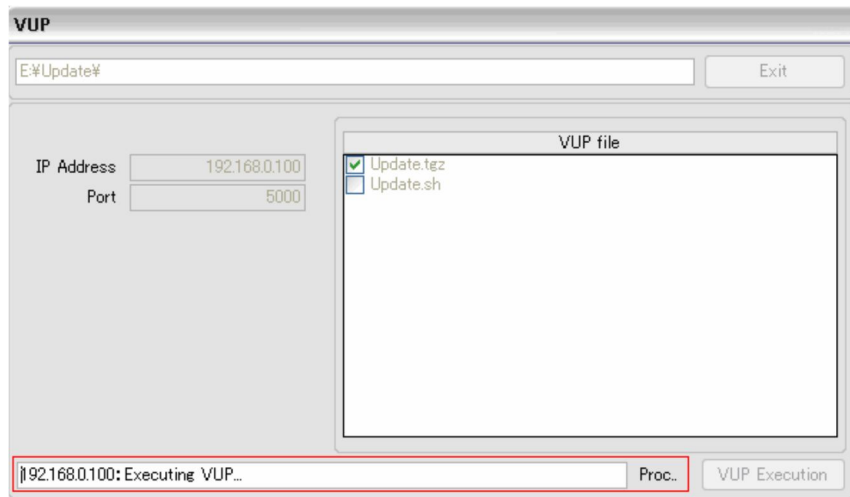


5. Double-click "vup.exe" in the Update folder to start the program upgrade tool.
6. Ensure that "Update.sh" and "Update.tgz" are checked.
7. Type [192.168.0.100] (XP's IP address) in the "IP Address" field in the VUP tool.



## 2.3 Starting program upgrade

1. On the PC, press “VUP Execution” button on the VUP tool screen to start program upgrade.
2. XP software will be sent from the PC to the XP main unit and the status will be displayed at the bottom of the screen.

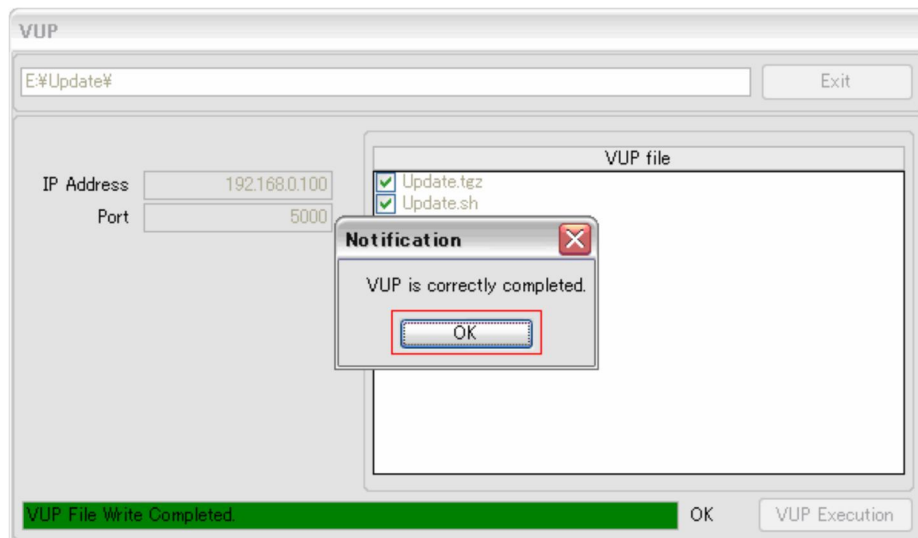


3. The following message will be displayed on the XP main unit.

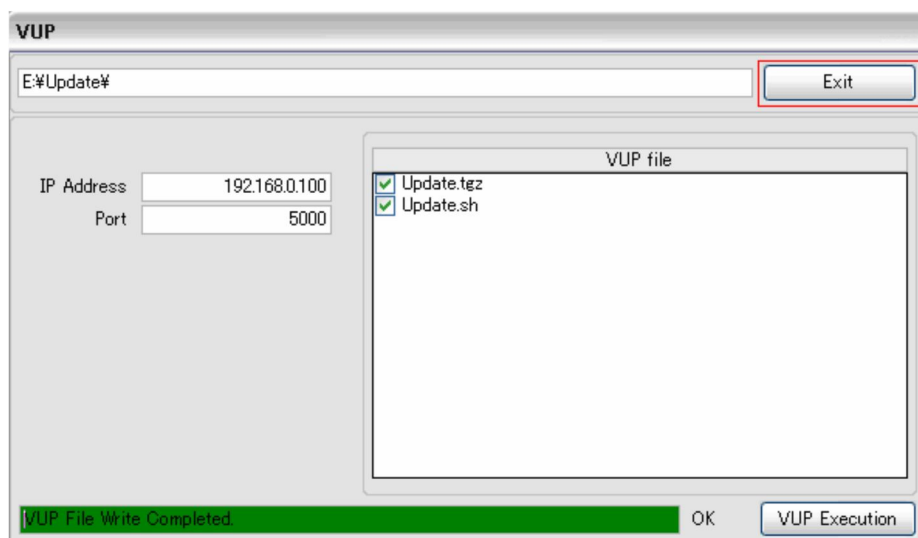


## 2.4 Completing program upgrade

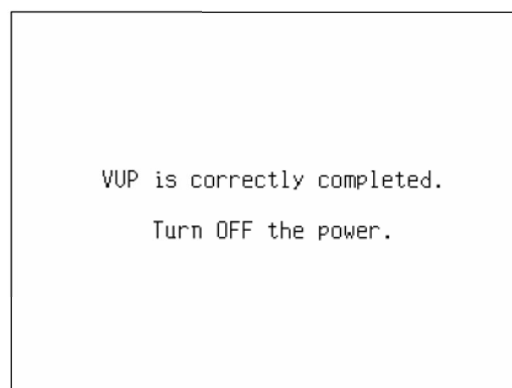
1. When program upgrade is completed, "VUP is correctly completed" dialog box will appear on the PC's VUP tool screen. Click [OK] button.



2. Then, click [Exit] button on the VUP tool screen.



3. The following message will be displayed on the XP main unit.



4. Turn OFF the power switch of the XP main unit.



## 2.5 Checking program upgrade results

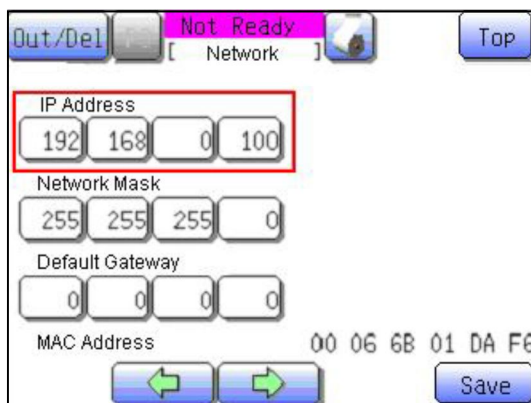
1. Restart the XP main unit using Hot Start to enter the service mode.

\* When restarting the main unit for the first time, it may not be started properly. In that case, turn OFF the power switch and restart the main unit using Hot Start.

2. Go to [Menu] -> [Maint.] -> [Status Display] to view the following screen.
3. Check "Main Ver." In the following screen.



4. Go to [Menu] -> [Settings] -> [Network] -> the instrument's screen.
5. Enter the IP address you wrote down earlier and save.



The program upgrade is now complete.

[End of document]