



Test instruction

Number: 051-AEN

Revision: 01

Number of pages: 5

Assistina 301plus

VALID FOR FOLLOWING PRODUCTS:

REF 00030125

REF 00030130

REF 00030135

REF 00030140

Table of contents

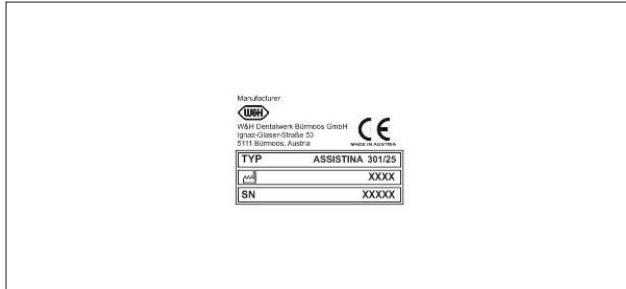
1. REGISTRATION OF PRODUCT DATA	2
2. GENERAL SAFETY INSTRUCTIONS	2
3. VISUAL INSPECTION AND FUNCTIONAL TEST	3

Test instruction

Number: 051-AEN



1. REGISTRATION OF PRODUCT DATA



Product data:

REF 00030125, SN 01001, Assistina 301plus

attached accessories:

REF 02685000 (base adaptor)

2. GENERAL SAFETY INSTRUCTIONS

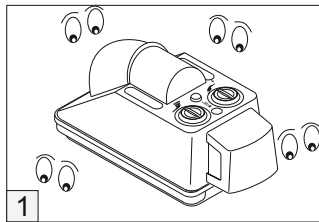
- * Place the unit only in adequately ventilated premises!
- * Keep your hands out of the inside of the unit during maintenance operations!
- * Fit the transmission instrument, turbine, turbine adaptor, air motor or dental scaler only when parts are no longer moving! (Damage to the drive, driver assembly, transmission instruments).
- * Always close the cover and waste disposal tray before starting up the unit.
- * Keep cleaning fluid/service oil away from the eyes!
- * Do not swallow cleaning fluid!
- * Keep service oil away from the skin!
- * Cleaning solution and its residues are flammable. Flash point 25° C.
- * Avoid sources of ignition! Do not smoke!



Test instruction

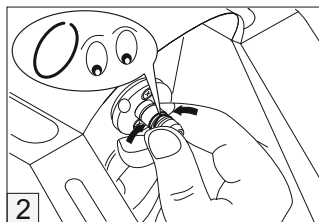
Number: 051-AEN

3. OPTICAL INSPECTION AND FUNCTIONAL TEST



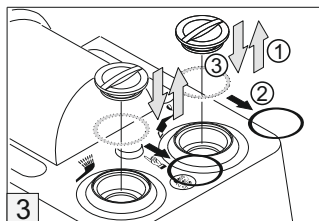
General optical check

- Have a look at damages in transit

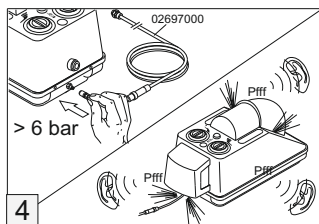


Check the motor coupling

- Test both o-rings (no. 02695700) for right position resp. for possible damages



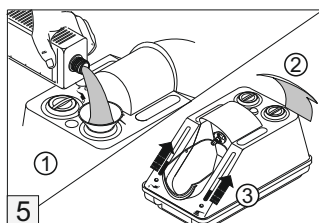
Remove transport seals



Connect the air-pressure

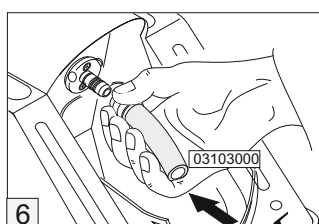
- (>6 bar flow pressure)

Pay attention to exit noises of air



Check the level indicator

- Fill in some oil and cleaning liquid ①
- Lift/Put down the unit at the rear ②
- Levels of liquid go up/down ③



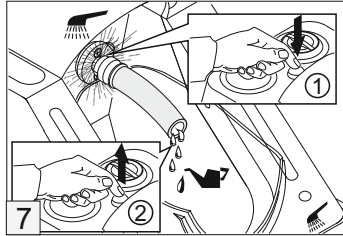
Check the function of the pump

- Put the adapter 03103000 on the motor coupling



Test instruction

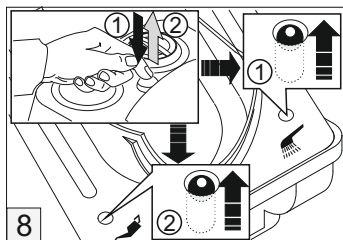
Number: 051-AEN



Continuation:

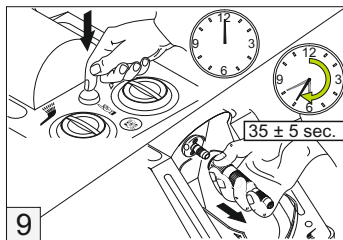
Check the function of the pump

- ① Push the program button for approx. 2 sec.; cleaning liquid comes out directly at the motor coupling
- ② Remove the button; oil comes spiral through the adapter



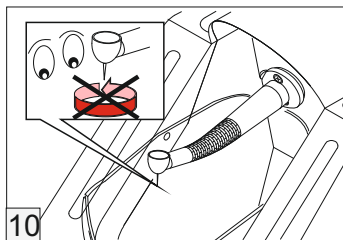
Check the function indicators

- ① Push the program button for approx. 2 sec.; a green ball appears in the right function display (cleaning liquid)
- ② Remove the button; another green ball appears in the left display (oil)
- Both balls have to get down during the cycle



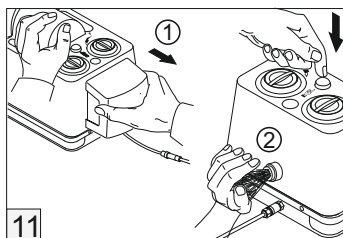
Check the cycle time

- Push program button
- The time starting when removing the button till the audible decreasing of the speed has to be 35±5sec.



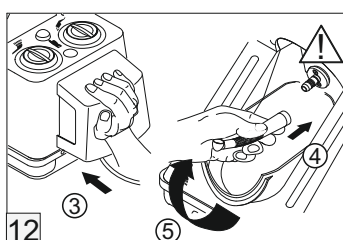
Check the drive system

- Fit a contra angle (1:1) with inserted bur to the motor coupling
- Start the unit and check the rotation of the bur



Check the suction pump

- ① Pull off the filter
- ② Start the unit and check by hand on the outlet of the suction pump the exit of the exhausted air

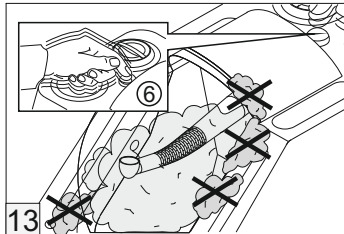


- ③ Put on the filter
- ④ Put an instrument on the motor coupling
- ⚠ Motor has to stand still!
- ⑤ Close the dome



Test instruction

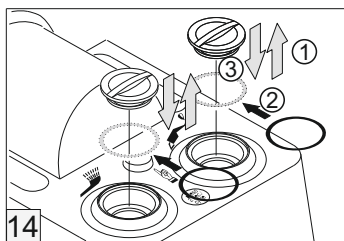
Number: 051-AEN



Continuation:

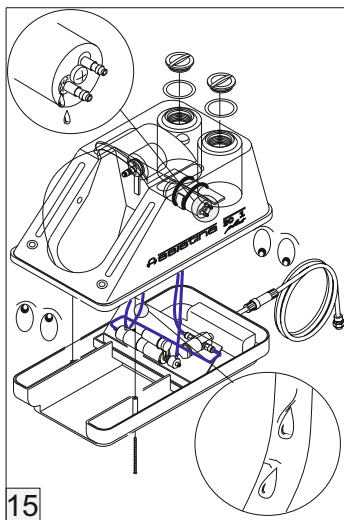
Check the suction pump

- ⑥ Push the program button
5 times running - no aerosol
mist may exit off the dome



Test for leaks

- Mount the transport seals



- Open the unit

- Test all tubings, connections and tanks for leakage