

Products Name	EX-203	
Type		
Model Name/Products No.	B2	M136
	B3	M137
	M4	M138
Manufactured Period		

No.	PARTS No.	DESCRIPTION	Q'ty	REMARK
1	M136 062	Insert Joint O-Ring	1Set	A set consists of 2 pieces.
2	M136 063	Insert Joint Screw	1Set	A set consists of 3 pieces.
3	M136 014A	Insert Joint Ass'y	1	
4	M136 179A	Knob	1	
5	M136 123	Hook Spring	1	
6	M136 183B	Hook	1	
7	M136 192B	Motor Retaining Nut	1	
8	M136 013	Rotor Ass'y	1	
9	M007 131S	Vane	1Set	A set consists of 5 pieces.
10	M007 144S	Vane Spring	1Set	A set consists of 5 pieces.
11	M136 140B	Cylinder	1	
12	M136 132B	Adjust Washer	1	
13	M136 141A	Cylinder Plate	1	
14	B22227-7923	Ball Bearing	1	
15	M007 134A	Wave Washer	1	
16	M136 126C	Bearing Housing (C)	1	
17	0414-095230	Cylinder Locating Pin	1	φ0.95 x 19 L
18	M136 064	Motor Locating Pin	1Set	φ1 x 39 L A set consists of 2 pieces.
19	M136 191G	Sheath	1	
20	0312-048070	Intake Seal O-Ring	1	
21	M136 118A	Cock	1	
22	0312-034080	Cock Seal O-Ring	1	
23	M136 065	Joint O-Ring	1Set	A set consists of 2 pieces.
24	M136 117E	Switching Ring	1	
25	M136 122	Cock Screw	1	
26	M138 011	Joint M4	1	
27	M136 060	Joint Fixing Screw	1Set	A set consists of 3 pieces.

[Next](#)

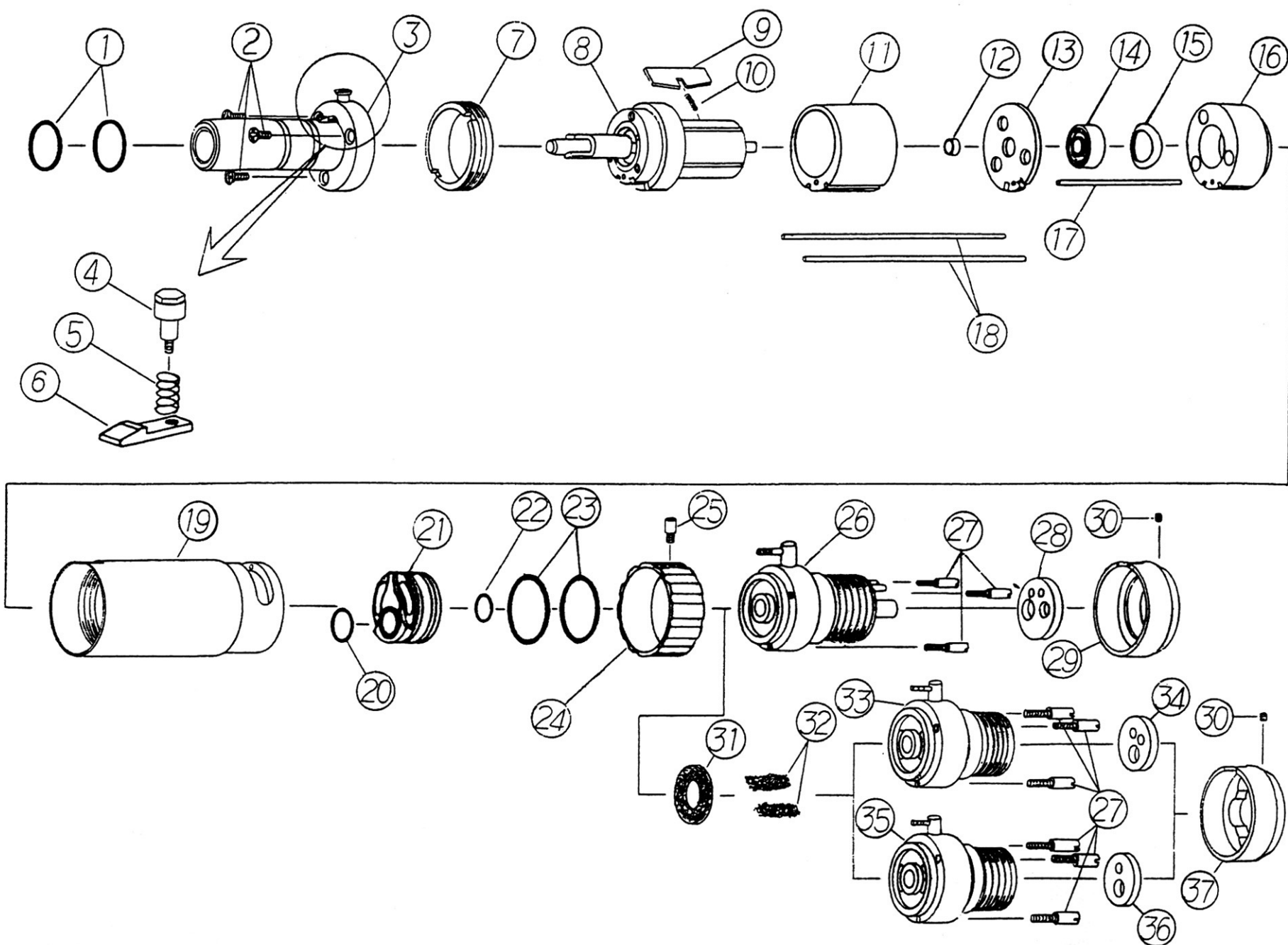
C-029-04

No.	PARTS No.	DESCRIPTION	Q'ty	REMARK
28	T114 172A	Gasket M4	1	
29	M138 103B	Cover	1	For M4
30	R20101-1725	Cover Fixing Screw	1	
31	M178 201	Felt	1	For B2/B3
32	M136 061	Muffler Element	1Set	For B2/B3 A set consists of 2 pieces.
33	M137 011B	Joint B3	1	
34	T112 172	Gasket B3	1	
35	M136 011B	Joint B2	1	
36	M136 172	Gasket B2	1	
37	M138 103B	Cover	1	For B2/B3

[Back](#)

C-029-05

[Return to C](#)
[Return to Top Page](#)



EX-203

C-029-06