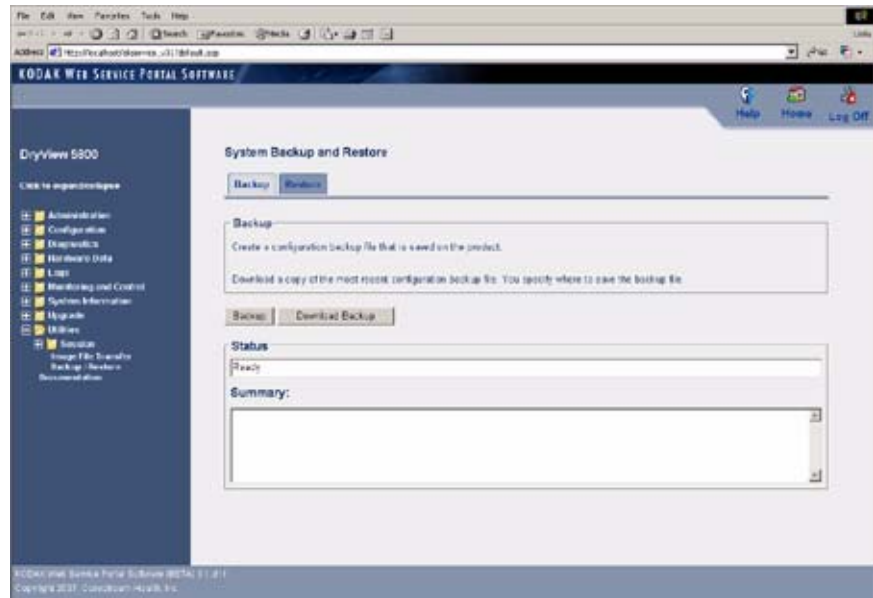

Section 8: Additional Service Procedures

Making a Configuration Backup

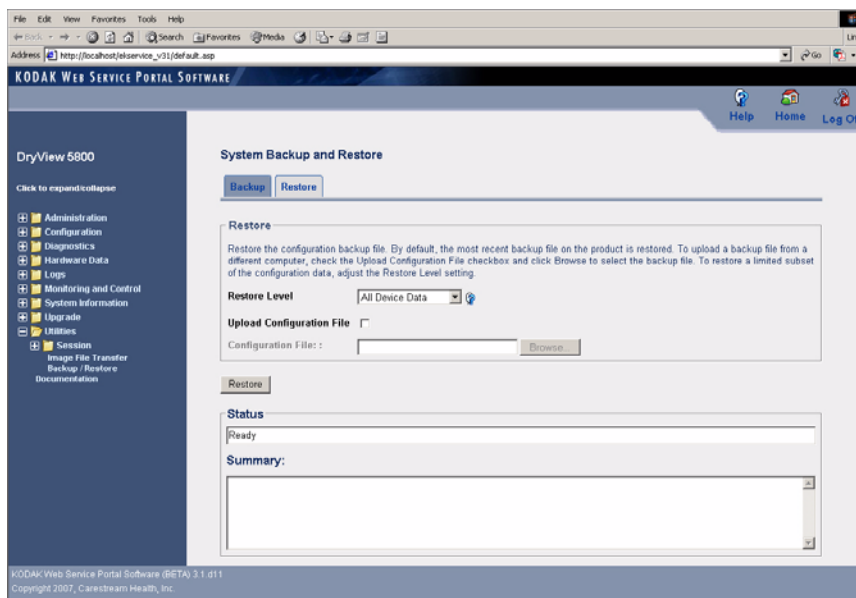
1. Log on to the SERVICE TOOL (see Installation Instructions, [“Logging Onto the Service Tool”](#)).
2. Select: **Utilities>Backup/Restore**



3. To make a backup of the configuration parameters to the HARD DRIVE, click [Backup].
4. To download the backup data to your LAPTOP COMPUTER:
 - a. Click [Download Backup].
 - b. Select a destination on your LAPTOP COMPUTER to save the file.
 - c. Click [Save] to place the backup file in the selected destination.
5. Log off from the SERVICE TOOL (see Installation Instructions, [“Logging Off the Service Tool”](#)).

Restoring the Configuration

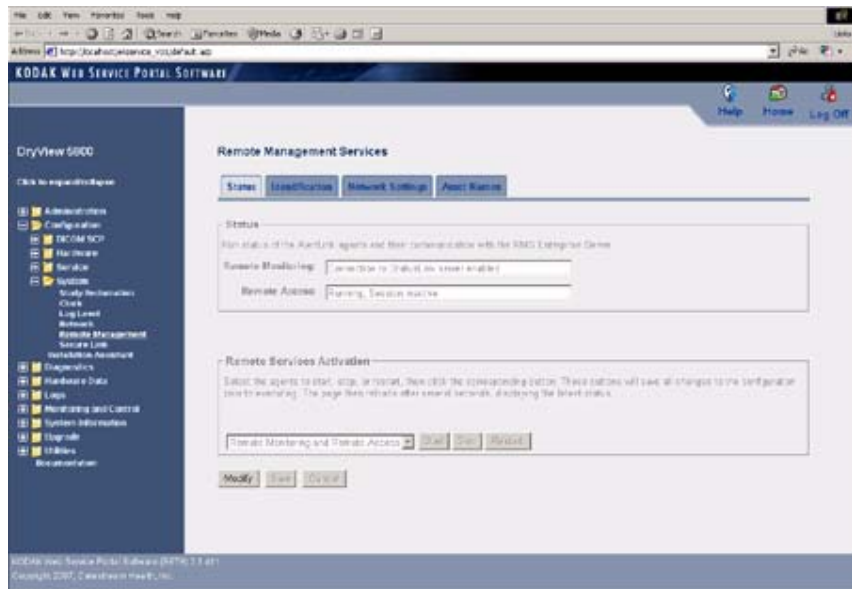
1. Log on to the SERVICE TOOL (see Installation Instructions, [“Logging Onto the Service Tool”](#)).
2. Select: **Utilities>Backup/Restore**
3. Click the “Restore” tab.



4. Select the type of information to be restored from the "Restore Level" drop-down menu.
5. To restore backup data from the HARD DRIVE, click [Restore].
6. To upload stored configuration data from your LAPTOP COMPUTER to the HARD DRIVE, select the "Upload Configuration File" check box.
7. Click [Browse].
8. When the "Choose File" screen displays, select the ".bin" file.
9. Click:
 - [Open]
 - [Restore]
10. Is the CARESTREAM Remote Management Services supposed to be active on the IMAGER?

Yes	No
Continue with Step 11 .	Advance to Step 13 .

11. Select: **Configuration>System>Remote Management**



12. Click:

- [Modify]
- [Start]

IMPORTANT:

You must restart the Imager from the SERVICE TOOL.

13. Select: **Utilities>Session>Restart**

14. Click [Restart].

Wait for the Imager to restart.

15. If you are finished with the SERVICE TOOL:

- a. Disconnect the LAPTOP COMPUTER from the Imager.
- b. Install the RIGHT PANEL.