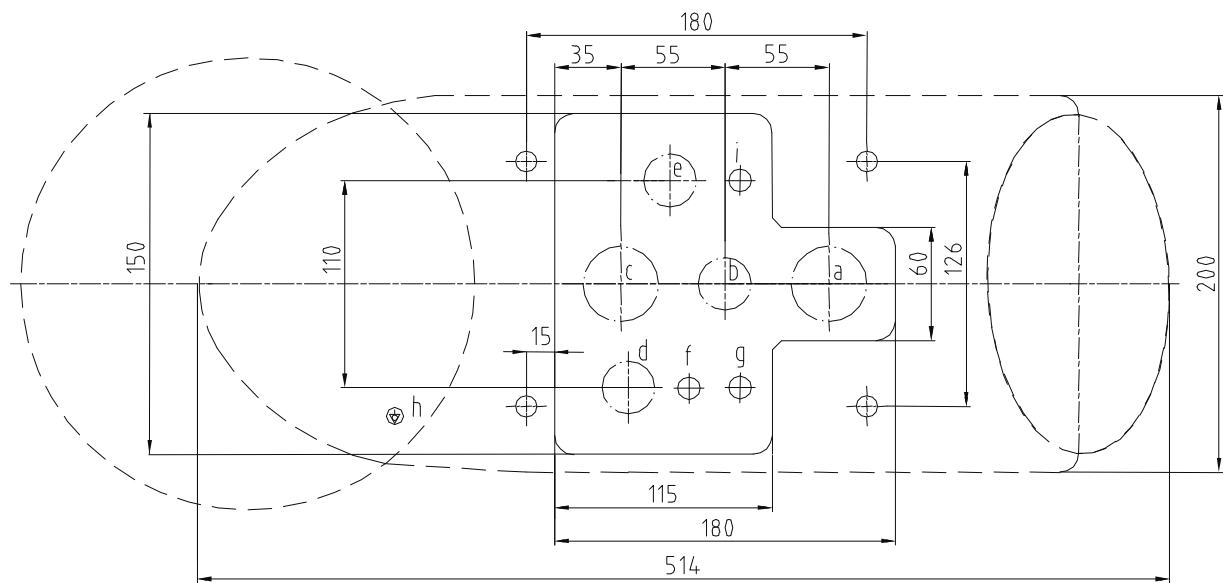


INSTALLATION PLAN OF THE DIPLOMAT ADEPT UNITS DA130-DA170



a - water waste- Ø 32 mmPVC shaped pipe, 30 mm above the floor level

b - water supply -1/2" pipe (PVC, Cu) finished with a pipe socket with G1/2" internal thread, 20 mm above the floor level

c - suction - Ø 32 mmPVC shaped pipe, 30 mm above the floor level

d - electroinstal. tube /conduit/ MONOFLEX-PVC(Ø21): supply cable 3x2,5mm² Cu, (length above the floor level 500mm) earthing conductor CY 1x4 . GNYE (green-yellow)

e - air supply - 3/8" pipe (PVC, Cu) finished with G3/8" external thread,

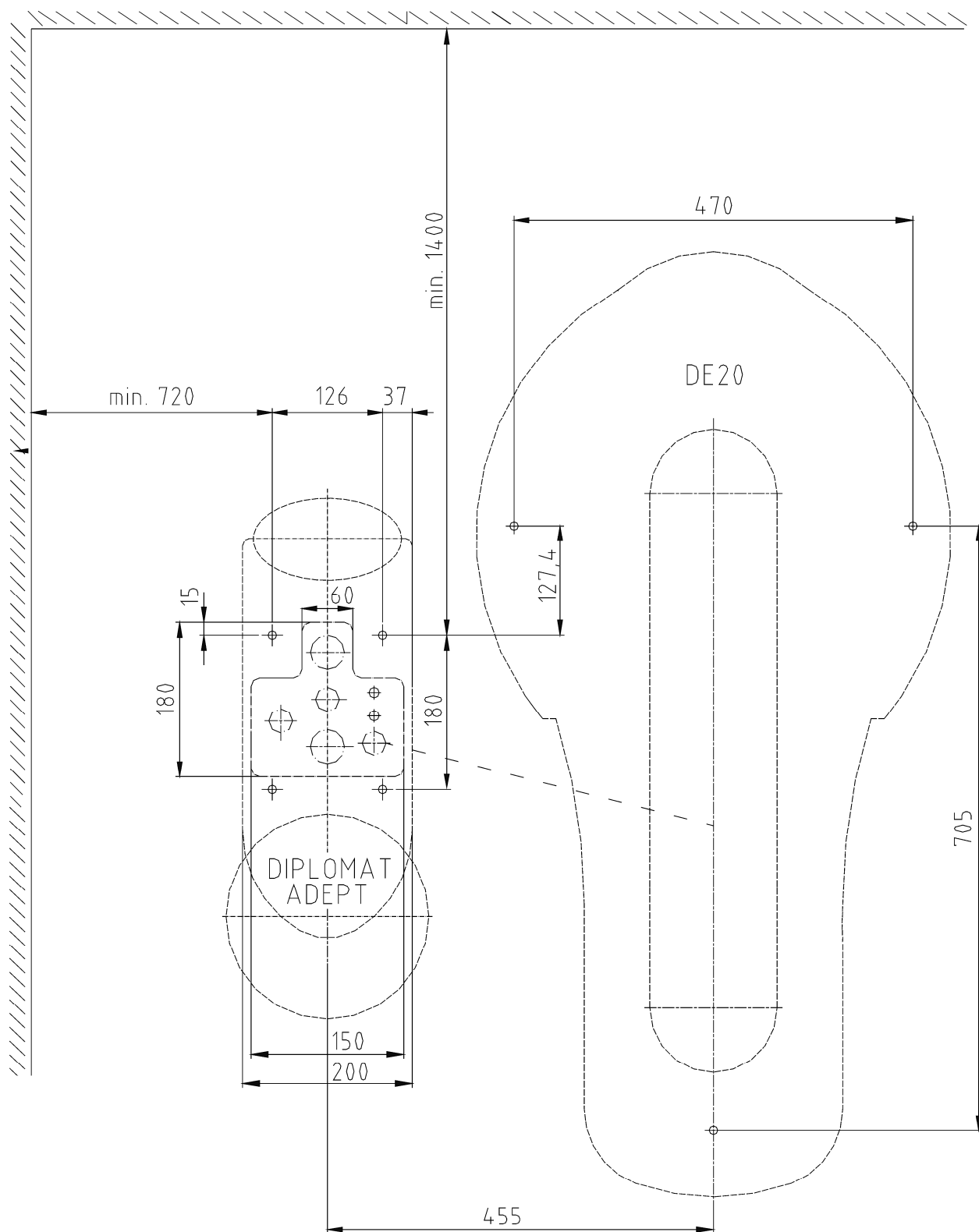
f - electroinstal. tube /conduit/ MONOFLEX-PVC(Ø21):chair supply cable 3 x 2,5 mm² Cu (length above the floor level 500 mm) earthing conductor CY 1x4 . GNYE (green-yellow)

g - electroinstal. tube /conduit/MONOFLEX-PVC(Ø16): suction control 2 x1mm Cu control of door opening, bell...2x0,5mm Cu . if connected

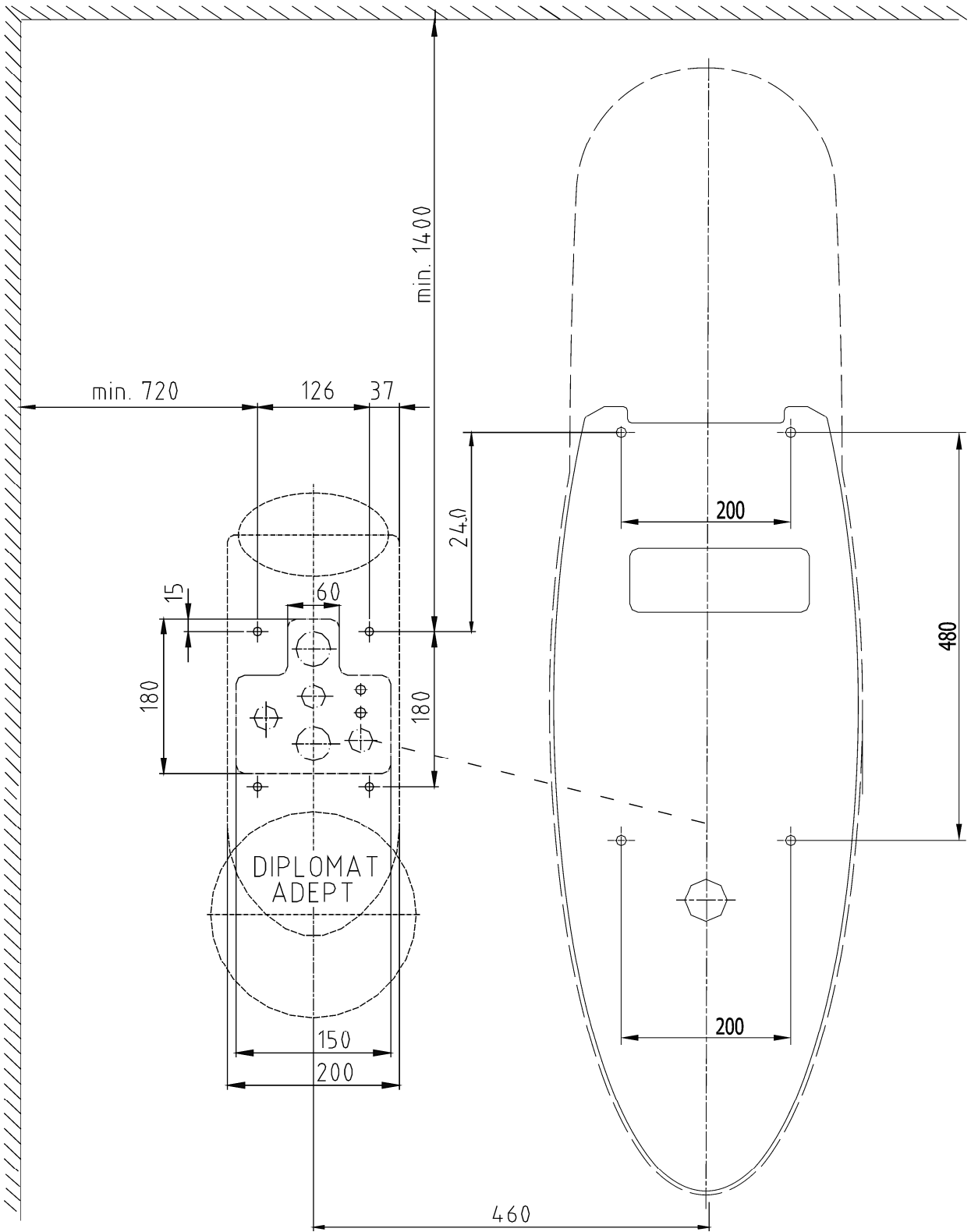
h - earthing

i - cable for the control of the chair

ARRANGEMENT OF THE INSTALLATION OPENINGS FOR THE DIPLOMAT ADEPT UNITS WITH THE DE20 CHAIR



ARRANGEMENT OF THE INSTALLATION OPENINGS FOR THE DIPLOMAT ADEPT UNITS WITH THE
DM20 CHAIR

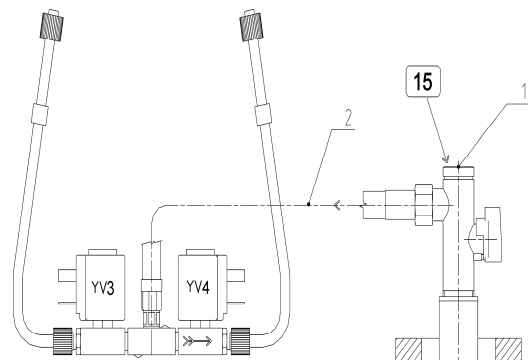


CONNECTION OF THE UNITS TO THE DISTRIBUTION OF WATER, AIR, SUCTION AND WASTE

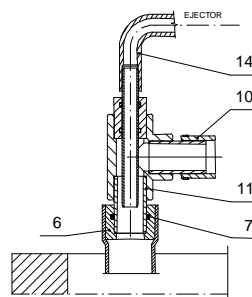
Connection with water regulator: Screw the angle valve with filter G1/2" (1) into the pipe of water supply and interconnect it with the electromagnetic valve YV2 (3) by means of the hose with endings (2) and seal with a sealing (the sealing forms part of the hose). Seal the angle valve thread with PTFE tape. Glue the waste ending (6) with the sealing rings (7) into the PVC shaped pipe for water waste /drain/ and suction by means of an adhesive for PVC. Put the waste insert II (11) into the waste hose (10); put approx. 1/3 length of the waste insert I (9) into the aspirator hose and secure it with a hose clip (8). Interconnect the electromagnetic valve of the water supply YV2 (3) through the Ø1.5/2.7 tubing (12) with the insert of the water waste (11) and secure it with hollow rivets (13) on both ends. Then place the waste insert II (11), waste insert I (9) into the ending of the water waste (6).

Connection without the water regulator is made without the electromag. valve YV2 (3). The air supply pipe (4) is connected with the electromagnetic valve YV1 (5) by means of the hose with endings (2) and sealed (the sealing forms part of the hose).

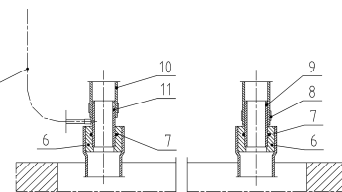
Version without water regulator



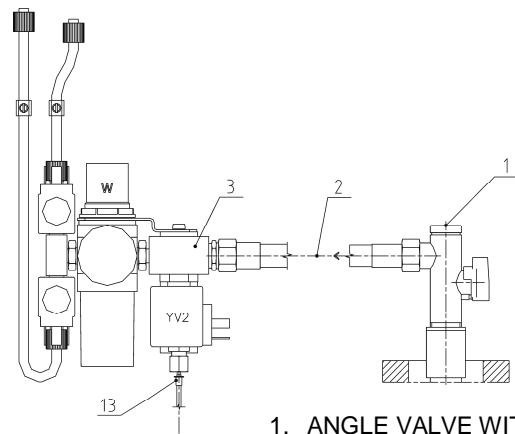
Version with ejector



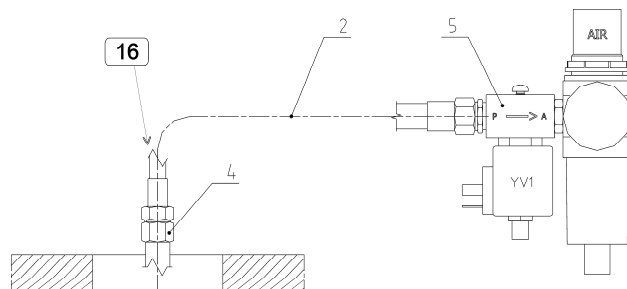
Version with big and small aspirator



Version with water regulator

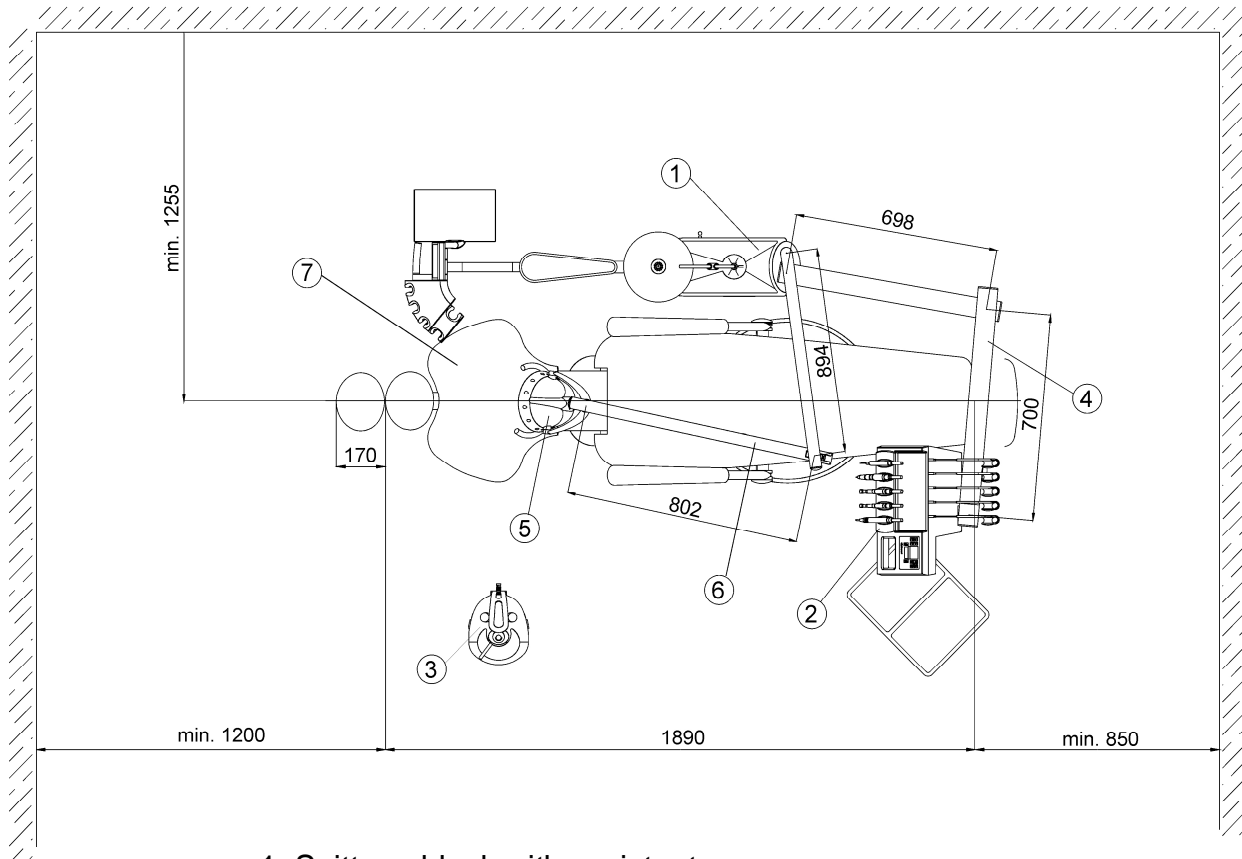
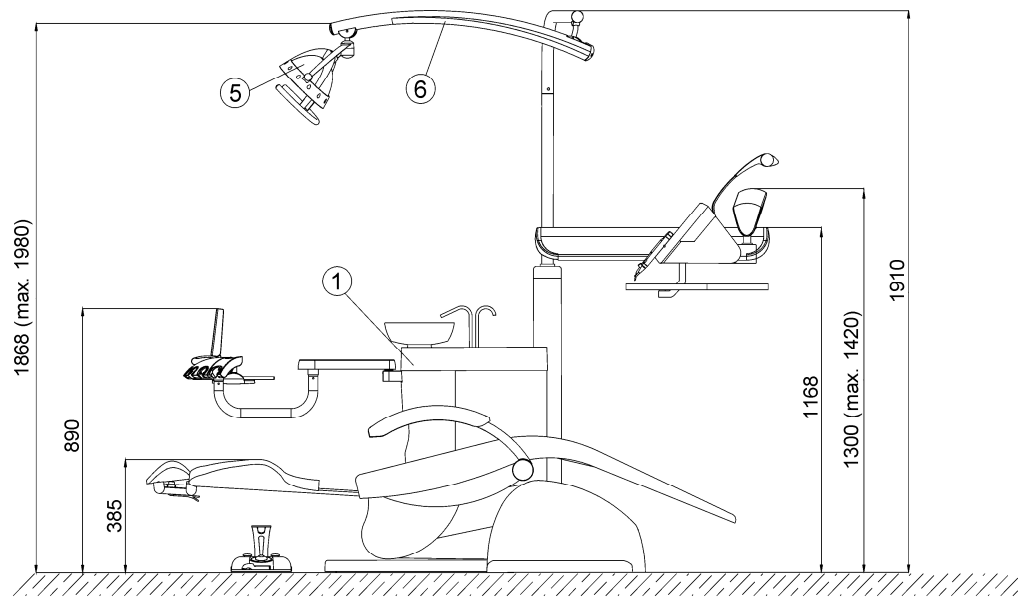


Air regulation with exhaust of condensate



1. ANGLE VALVE WITH FILTER G1/2"
2. FLEXIHOSEA G 3/8"
3. ELECTROMAGNETIC VALVE WITH WATER REGULATOR
4. AIR SUPPLY PIPE G 3/8" (NOT PART OF THE DELIVERY)
5. ELECTROMAGNETIC VALVE
6. WASTE ENDING /TIP/
7. O - RING
8. HOSE CLIP
9. WASTE INSERT I.
10. HOSE
11. WASTE INSERT II.
12. TUBING, GREEN 1,5/2,7
13. RIVET 4X6
14. WASTE BODY (FOR THE VERSION WITH PNEUMATIC EJECTOR)
15. WATER SUPPLY
16. AIR SUPPLY

DESCRIPTION OF THE DENTAL UNIT DA170



1. Spittoon block with assistant arm
 2. Control panel
 3. Foot controller
 4. Pantograph of the control panel
 5. Lamp
 6. Pantograph of the light
 7. Dental chair of DIPLOMAT series
- * - main switch, located on the outer side of the spittoon block